

INSTRUCTION AND PARTS BOOK NO. 10-18-11

# MEYER'S

HEAVY DUTY VERTICAL BEATER MANURE SPREADERS  
MODEL: VB750



**DO NOT** operate this Spreader until you have read this book

**NEVER** repair or clean this Spreader while PTO is engaged



Manufactured in DORCHESTER, WI by

**MEYER'S EQUIPMENT  
MFG. CORP.**

# INTRODUCTION

Congratulations on the purchase of your new Meyer's Manure Spreader. With its optional equipment this is the simplest, most flexible system on the market today. With proper operation and preventative maintenance it will last for years.



This **SAFETY ALERT SYMBOL** means **ATTENTION! BE CAREFUL! YOUR SAFETY IS INVOLVED!** It stresses an attitude of **HEADS UP FOR SAFETY**. When you see this symbol, be alert to the possibility of **PERSONAL INJURY** and carefully read the message that follows.



## **WARNING:**

**NEVER OPERATE WITHOUT ALL COVERS, SHIELDS AND GUARDS IN PLACE. KEEP HANDS, FEET AND CLOTHING AWAY FROM MOVING PARTS. SOME COVERS AND GUARDS HAVE BEEN REMOVED FOR ILLUSTRATIVE PURPOSES ONLY IN THIS MANUAL. FAILURE TO HEED MAY RESULT IN SERIOUS PERSONAL INJURY OR DEATH.**

At the front of this manual is a Product Registration and Inspection Certificate. Be sure your dealer has completed this certificate and forwarded a copy to the manufacturer to validate the manufacturer's warranty.

The product model and serial number are recorded on this certificate for your convenience and for proper identification of your spreader by your dealer and the manufacturer when ordering repair parts.

The serial number plate is found on the front center of the spreader, just below the Implement PTO shaft. For information on ordering repair parts, refer to the repair parts section of this manual. Orders must list the complete description, correct part number, and total amount required.

All references to right hand and left hand apply to the product as viewed from the rear of the machine and facing the direction of forward travel.

You are urged to study this manual and follow the instructions carefully. Your efforts will be repaid in better operation and service as well as a savings in time and repair expense. Failure to read this manual and understand the machine could lead to serious injury. If you do not understand instructions in this manual, contact either your dealer or Meyer's Equipment Manufacturing Corp. at Dorchester, WI 54425.

This supercedes all previous published instructions

# TABLE OF CONTENTS

INTRODUCTION . . . . .	2
SAFETY. . . . .	5
SAFETY SIGNS . . . . .	7
MANURE SPREADER SAFETY . . . . .	9
MANDATORY SAFETY SHUTDOWN PROCEDURE. . . . .	10
PRE-OPERATION. . . . .	11
General . . . . .	11
Tractor Hitch And PTO Requirements . . . . .	11
ADMA Recommendations: . . . . .	11
Tractor Size Requirements. . . . .	12
Tractor Towing Size Requirements. . . . .	12
Material Estimated Weight Per Cubic Foot . . . . .	12
Theory Of Operation . . . . .	12
Hydraulic System . . . . .	12
General. . . . .	12
Converting A Spreader From Closed Center To Open Center. . . . .	13
To Convert <u>Standard</u> Non Flow Controlled Closed Center System To Open Center. . . . .	14
To Convert <u>Optional</u> On Board Flow Controlled Closed Center System To Open Center . . . . .	14
Electric Control Installation for <u>Optional</u> On Board Flow Controlled System . . . . .	15
Transporting . . . . .	16
General. . . . .	16
Use Safety Chain. . . . .	16
Use Lights . . . . .	16
OPERATION . . . . .	17
Tractor Hookup . . . . .	17
Loading . . . . .	17
Unloading . . . . .	17
Mandatory Safety Shutdown Procedure . . . . .	18
MAINTENANCE, ADJUSTMENTS & LUBRICATION . . . . .	19
Wheel And Tire Maintenance And Repair . . . . .	19
Lock Ring Rim . . . . .	19
Rear-Automatic Over Running Clutch . . . . .	19
Mandatory Safety Shutdown Procedure. . . . .	19
Adjustments . . . . .	20
Apron Chain . . . . .	20
Lubrication . . . . .	20
Cleaning And Storage . . . . .	22
REPAIR PARTS. . . . .	24
Main Frame & Box Parts. . . . .	24
Hydraulic End Gate & Related Parts. . . . .	26
Jack Assembly . . . . .	28
Axles, Wheels, Spindles And Related Parts . . . . .	30

1 3/4" Drive Train . . . . .	32
Apron & Related Parts . . . . .	34
Apron & Related Parts . . . . .	36
Lube Bank . . . . .	38
15mm Beater Head Assembly, Standard . . . . .	40
Vertical Beaters & Related Parts . . . . .	42
Apron Drive Gearbox . . . . .	44
Removable CV Telescoping Universal Joint Assembly With Guard, Trailer To Tractor . . . .	46
35E Universal Joint, Telescoping Assembly w/ Guard - Rear With Over-Running Clutch . . . .	47
Standard Highway Lighting With Amber Side Light . . . . .	48
Hydraulic Assembly - Electric Flow Control - Closed Center . . . . .	50
Hydraulic Assembly-No Electric Flow Control-Closed Center . . . . .	54
Hydraulic Assembly - No Electric Flow Control - Open Center . . . . .	56
Weigh Scale . . . . .	58
LIMITED WARRANTY STATEMENT . . . . .	60

# SAFETY

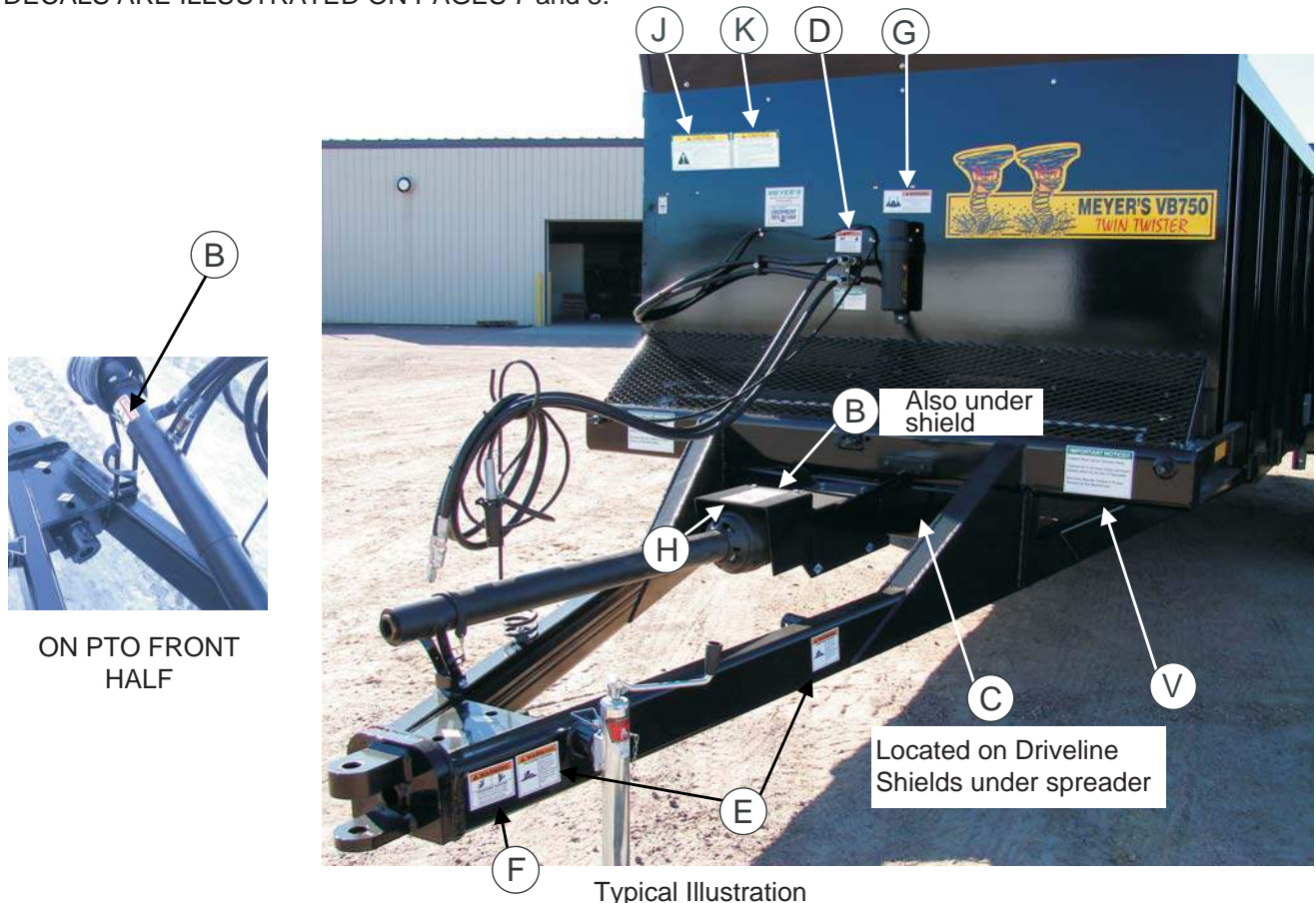
A brief definition of signal words that may be used in this manual:

**⚠ DANGER:** Indicates an imminently hazardous situation that, if not avoided, will result in serious injury or death.

**⚠ WARNING:** Indicates a potentially hazardous situation that, if not avoided, could result in death or serious injury, and includes hazards that are exposed when guards are removed.

**⚠ CAUTION:** Indicates a potentially hazardous situation that, if not avoided, may result in minor or moderate injury.

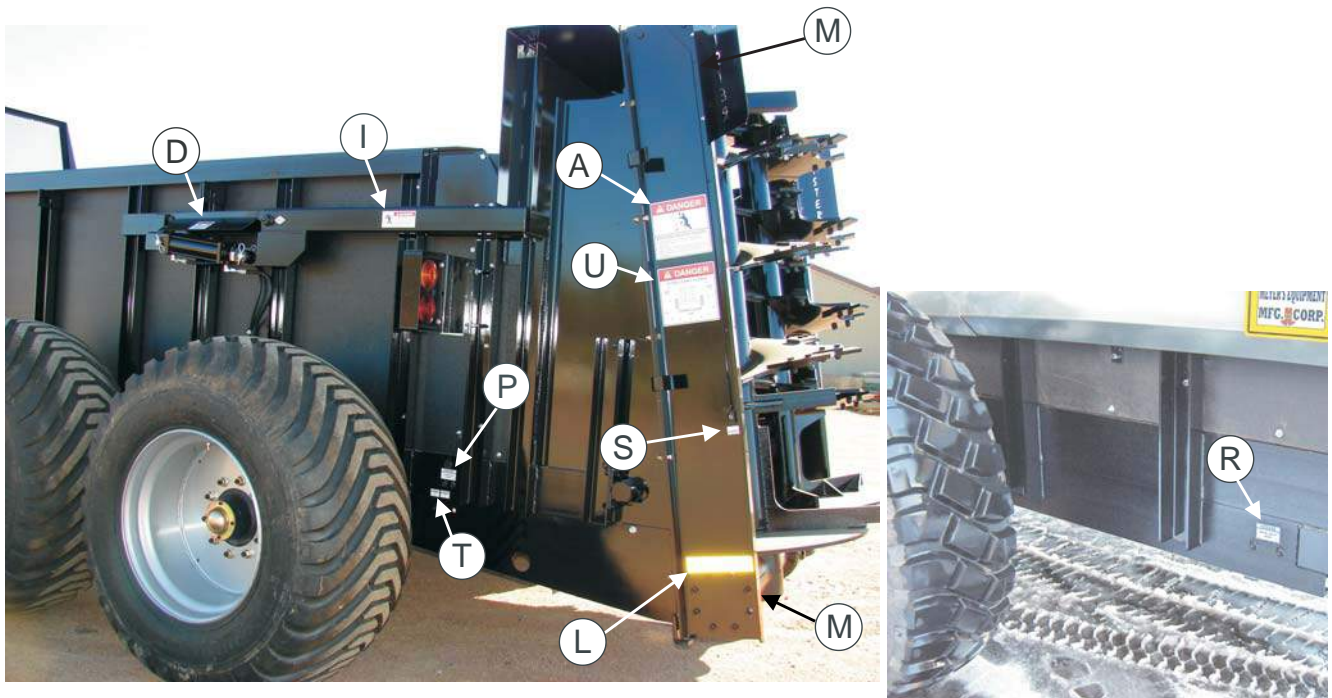
DECALS ARE ILLUSTRATED ON PAGES 7 and 8.



**⚠ CAUTION:** IF ANY SAFETY SIGN BECOMES UNREADABLE FOR ANY REASON, THE SIGN MUST BE REPLACED WITH A NEW SIGN. IF THE SPREADER IS REPAINTED, ALL SAFETY SIGNS MUST BE REPLACED. CONTACT YOUR DEALER OR MEYER'S EQUIPMENT MANUFACTURING CORP. IF YOU REQUIRE ANY SHIELD OR SIGNS FOR REPLACEMENT.



DECALS ARE ILLUSTRATED ON PAGES 7 and 8.



**⚠ CAUTION:** IF ANY SAFETY SIGN BECOMES UNREADABLE FOR ANY REASON, THE SIGN MUST BE REPLACED WITH A NEW SIGN. IF THE SPREADER IS REPAINTED, ALL SAFETY SIGNS MUST BE REPLACED. CONTACT YOUR DEALER OR MEYER'S EQUIPMENT MANUFACTURING CORP. IF YOU REQUIRE ANY SHIELD OR SIGNS FOR REPLACEMENT.

# SAFETY SIGNS

**⚠ DANGER**



**ROTATING BEATER HAZARD**  
To prevent serious injury or death by entanglement:

- Do not clean, stand in, or climb on machine when operating.
- Place controls in neutral, stop engine, set park brake, remove ignition key and wait for all moving parts to stop before cleaning, servicing, adjusting, repairing or unplugging.

DECAL A. PART NO. VB107

**⚠ DANGER**



**ROTATING DRIVELINE HAZARD**  
To prevent serious injury or death from rotating driveline:

- Keep all guards in place when operating.
- Operate only at 1000 RPM.
- Keep hands, feet, hair and clothing away from moving parts.

DECAL B. PART NO. SW105

**⚠ DANGER**



**SHIELD MISSING  
DO NOT OPERATE**

**⚠ DANGER**



**SHIELD MISSING  
DO NOT OPERATE**

**⚠ DANGER**

DECAL C. PART NO. SW102

**⚠ WARNING**




**HIGH-PRESSURE FLUID HAZARD**  
To prevent serious injury or death:

- Relieve pressure on system before repairing or adjusting or disconnecting.
- Wear proper hand and eye protection when searching for leaks. Use wood or cardboard instead of hands.
- Keep all components in good repair.

DECAL D. PART NO. 700

**⚠ WARNING**

**CRUSHING HAZARD**



Support jack is NOT intended to support a loaded spreader box, mechanical damage to the jack and/or its support may result.

DECAL E. PART NO. 3003

**⚠ WARNING**

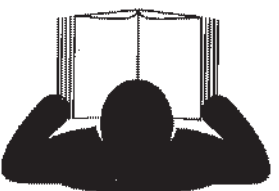



**CRUSHING HAZARD**  
To prevent serious injury or death:

- Keep hands and body out of hitch area when attaching towing vehicle.
- Keep body clear of crush point between towing vehicle and load.

DECAL F. PART NO. 3004

**⚠ WARNING**



**TO PREVENT SERIOUS INJURY OR DEATH**

- AVOID unsafe operation or maintenance.
- DO NOT start, operate, or work on this machine without first carefully reading and thoroughly understanding the entire contents of the operators manual. (Require the name of all personnel who will operate this machine.)
- If operators manual is lost, contact your nearest Meyer's Dealership or write or call:


MEYER'S EQUIPMENT MFG. CORP.  
P.O. Box 406 • Berchester, NY 14425  
Phone 1-800-783-4536

Please give your name, address, model and serial number of your machine. A manual will be furnished.

- If you have any questions about operation or adjustments, and maintenance of this machine, contact your Meyer's Dealership or Meyer's Equipment Mfg. Corp. before starting or continuing the operation of this machine.

DECAL G. PART NO. 3006

**⚠ DANGER**



**HYDRAULIC ENDGATE HAZARD**  
To prevent serious injury or death from crushing:

- Stand clear to avoid being struck by endgate arms.
- Do not stand or climb on machine when operating.
- Stay away from beneath the endgate and gate arms when they are in the raised position or are being lowered.

DECAL I. PART NO. 3001

**⚠ WARNING**

**MOVING PART HAZARD**  
To prevent serious injury or death from moving parts:

- Close and secure guards and shields before starting.
- Keep hand, feet, hair and clothing away from moving parts.
- Disconnect and lockout power source before adjusting or servicing.
- Do not stand or climb on machine when operating.

DECAL H. PART NO. SW406

**⚠ CAUTION:** IF ANY SAFETY SIGN BECOMES UNREADABLE FOR ANY REASON, THE SIGN MUST BE REPLACED WITH A NEW SIGN. IF THE SPREADER IS REPAINTED, ALL SAFETY SIGNS MUST BE REPLACED. CONTACT YOUR DEALER OR MEYER'S EQUIPMENT MANUFACTURING CORP. IF YOU REQUIRE ANY SHIELD OR SIGNS FOR REPLACEMENT.

# SAFETY SIGNS

**CAUTION**

**SAFETY FIRST DO NOT OPERATE SPREADER WITHOUT READING THIS SAFETY SIGN**

Equipment Mfg. Corp. always takes the operator's safety into consideration when designing farm machinery by covering exposed moving parts for protection; however, some areas cannot be guarded or shielded in order to assure proper operation. This safety alert symbol indicates a hazard.

It stresses an attitude of HEADS UP FOR SAFETY. Also read all other decals as they are also safety warnings.

- Remember, the careful operator is the best operator. Most accidents are caused by human error. Certain precautions must be observed to prevent the possibility of injury or damage.
- If the machine needs any attention, disengage the power take-off, stop the tractor engine and allow all mechanisms to stop before cleaning or adjusting.
- HEADS UP!** Raise before you operate equipment.
- DO NOT** allow persons other than the authorized adult operator near the machine.
- DO NOT** clean, adjust or lubricate the machine when any part is in operation.
- DO NOT** go near the spreader beater while tractor PTO is in motion.
- Keep hands, feet, clothing and hair away from all moving parts when machine is in operation.
- Loose or floppy clothing should not be worn by the operator.
- PTO shield must rotate freely and be in place.
- Avoid making short turns while machine is operating. This could cause serious accident or breakage.
- Please keep all decals clean so they are legible. Make sure all shields are in good condition.
- If any shield or decal should need replacement, contact your local dealer or our plant in Dorchester, Wis.
- Always use GENUINE MEYER'S replacement parts.

**ATTENTION! BE CAREFUL! YOUR SAFETY IS INVOLVED!**

**DECAL J. PART NO. SW2001**

**CAUTION**

**Moving parts hazard- To avoid injury or death:**

1. Keep all shields in place.
2. Stop engine before leaving operator's position to adjust, lubricate, clean or unclog machines, unless otherwise specifically recommended in the "Operator's Manual".
3. Wait for all movement to stop before servicing the machine.
4. Keep hands, feet and clothing away from power driven parts.
5. Keep off equipment unless seat or platform for operation and observation is provided.
6. Keep all others off.
7. Use flashing warning lights when operating on highways except when prohibited by law.
8. Make certain everyone is clear of machine before starting engine or operation.

**DECAL K. PART NO. SW2000**

**DECAL L. REFLECTIVE TAPE-YELLOW**  
PART NO. PM17-5910

**DECAL M. REFLECTIVE TAPE-RED**  
PART NO. PM17-5915

**GREASE**  
CONVEYOR  
HERE

**DECAL P. PART NO. VB101**

**GREASE**  
DRIVE SHAFT  
HERE | AXLE  
HERE

**DECAL Q. PART NO. VB102**

**START UP PROCEDURE**

1. Make certain everyone is clear of machine before starting engine or operation.
2. Turn Flow Control to Slowest Position.
3. Engage P.T.O.
4. RAISE END GATE.
5. Engage Tractor Hydraulic Lever to Full Flow Position.
6. Start Apron by Rotating Flow Control Dial Clockwise.

**DECAL O. PART NO. 3011**

**GREASE**  
DRIVE SHAFT  
HERE

**DECAL R. PART NO. VB103**

**GREASE**  
Top Beater  
**GREASE**

**DECAL S. PART NO. VB104**

**GREASE**  
AXLE

**DECAL T. PART NO. VB105**

**DANGER**  
FLYING DEBRIS HAZARD

150' 150'

STAND CLEAR 150'

**DECAL U. PART NO. VB106**

**IMPORTANT NOTICE!**

**Inspect Main Apron Tension Daily**  
Pull front plastic roller forward so 20" of chain does not touch plastic slide rail at front of spreader.

**Warranty May Be Voided if Proper Tension is Not Maintained.**

REAR CHAIN FRONT PLASTIC ROLLER PLASTIC RAIL

**DECAL V. PART NO. 3014**

**CAUTION:** IF ANY SAFETY SIGN BECOMES UNREADABLE FOR ANY REASON, THE SIGN MUST BE REPLACED WITH A NEW SIGN. IF THE SPREADER IS REPAINTED, ALL SAFETY SIGNS MUST BE REPLACED. CONTACT YOUR DEALER OR MEYER'S EQUIPMENT MANUFACTURING CORP. IF YOU REQUIRE ANY SHIELD OR SIGNS FOR REPLACEMENT.



# **MANURE SPREADER SAFETY**

## **CAUTION**

THERE ARE INHERENT HAZARDS ASSOCIATED WITH THE OPERATION OF A MANURE SPREADER. FOR YOUR SAFETY:

- Never Enter Spreader Box While In Operation For Any Reason.
- Only Properly Instructed People Should Operate The Spreader. Do Not Allow Children Or Inexperienced Persons To Operate Spreader.
- Keep All Guards And Shields In Place. Moving Parts Can Crush And Dismember.
- Clear The Area Before Equipment Start Up.
- Keep Hands, Feet, And Loose Clothing Away From Moving Parts.
- Do Not Go Near The Spreader Beaters While Machine Is Operating.
- Make Sure The PTO Is Securely Locked To Both The Tractor And Spreader Before Operating The Unit.
- Do Not Operate The PTO At Speeds Higher Than The Manufacturers Recommendations.
- Highway Traffic Is Not To Exceed 20 Mph. The Tires Supplied Are For Farm Use Only And Are Not Designed For Use Above This Speed Unless Equipped With High Speed Highway/Offroad Farm Tires.
- Use Adequate Safety Chains When Towing The Spreader.
- The Use Of A Slow moving Vehicle Sign Is Required On All Public Roads Unless Equipped With Flashing Hazard Lights. Obey All Applicable Highway Safety Laws And Rules.
- Always Use A Tractor Large Enough To Provide Sufficient Braking Assistance When Towing A Loaded Spreader.
- Use Caution When Traveling Over Uneven Terrain And When Approaching Stops.
- Do Not Load The Spreader Unless It Is Hitched To The Tractor.
- Do Not Unhitch A Loaded Spreader From The Tractor Leaving It Supported By Only The Jack.
- Park Your Spreader On Level Ground And Place Blocks Ahead Of And Behind The Wheels Before Unhooking From Tractor To Avoid Unexpected Rolling When Separated From The Tractor.
- Do Not Allow Riders on Spreader.

## **FAILURE TO HEED MAY RESULT IN SERIOUS PERSONAL INJURY OR DEATH**

## **CAUTION**

THERE ARE ADDITIONAL HAZARDS ASSOCIATED WITH THE SERVICE AND MAINTENANCE OF YOUR SPREADER.

FOR YOUR SAFETY:

- Inspect When First Delivered And Regularly Thereafter; That All Connections And Bolts Are Tight And Secure Before Operating.
- Retighten All Wheel Bolts After The First Hour Of Towing. Check Periodically Thereafter. See Maintenance, Wheels.
- Maintain Proper Tire Air Pressure At All Times. See Maintenance Chapter, Tires.
- Never Inflate Beyond Rim Or Tire Manufacturer's Approved Psi Rating. While Inflating, Stay Out Of The Trajectory & Stand Clear Of Tire/Wheel Assembly. A Tire Blow Out Or Rim/Wheel Failure Can Cause Serious Injury Or Death.
- If The Rim Lock Ring Should Blow Off, It And Other Parts Could Fly Off With Enough Force To Injure Or Kill A Person. Never Stand In The Potential Blow Out Area And Keep Others Away.
- Removing, Replacing And Repairing Industrial Tires And Rims With Lock Rings Can Be Dangerous Without Proper Tools, Equipment And Training To Perform This Service. It Is Recommended That This Work Be Performed Only By A Qualified Tire Repair Shop.

- Always Wear Eye Protection When Operating Or Servicing Spreader.
- Be Sure All Movement Has Stopped, The PTO Is Disconnected, The Tractor Is Shut Off And The Ignition Key Is Removed Before Servicing The Spreader Or Components.
- Escaping Hydraulic Fluid Under Pressure Can Penetrate The Skin And Cause Serious Injury. Relieve All Pressure From The Hydraulic System Before Connecting Or Disconnecting The Lines Or Making Repairs. Check All Hoses And Fittings Before Start-up And Periodically During Operation.
- Never Make Any Alterations Or Modifications To This Equipment.

**FAILURE TO HEED MAY RESULT IN SERIOUS PERSONAL INJURY OR DEATH**

** MANDATORY SAFETY SHUTDOWN PROCEDURE**

BEFORE unclogging, cleaning, adjusting, lubricating or servicing the unit:

1. Disengage the tractor PTO.
2. Shut off the tractor engine, remove the ignition key and take it with you.
3. Wait for all movement to stop.
4. Remove the Telescoping PTO Drive and ALL power connections from the tractor.

ONLY when you have taken these precautions can you be sure it is safe to proceed. Failure to follow the above procedure could lead to death or serious bodily injury.

Most farm accidents, like industrial, home and highway accidents, are caused by the failure of some individuals to observe simple and fundamental safety rules or precautions. For this reason farm accidents, just as other types of accidents, can be prevented by recognizing the causes of accidents and doing something about them before an accident occurs.

Regardless of the care used in the design and construction of farm equipment, there are many points that cannot be completely safe-guarded without interfering with accessibility and efficient operation.

A careful operator is the best insurance against an accident.

The complete observance of one simple rule would prevent many thousand serious injuries each year. That rule is "NEVER ATTEMPT TO CLEAN, OIL, OR ADJUST A MACHINE WHILE IN MOTION".

NATIONAL SAFETY COUNCIL

**BEFORE ATTEMPTING TO OPERATE YOUR NEW SPREADER BE SURE TO READ THIS OWNERS MANUAL AND FAMILIARIZE YOURSELF WITH THE MACHINE!! OBSERVE THE PRECAUTIONS IN THIS MANUAL FOR SAFE OPERATION OF THIS MACHINE!!**

# PRE-OPERATION

## GENERAL

Read the entire Owners Manual before attempting to operate this manure spreader. Before attempting any maintenance or repairs; always be sure all rotating parts have stopped and that the tractor is shut off, disconnect the PTO, relieve all hydraulic pressure and disconnect hydraulic hoses.



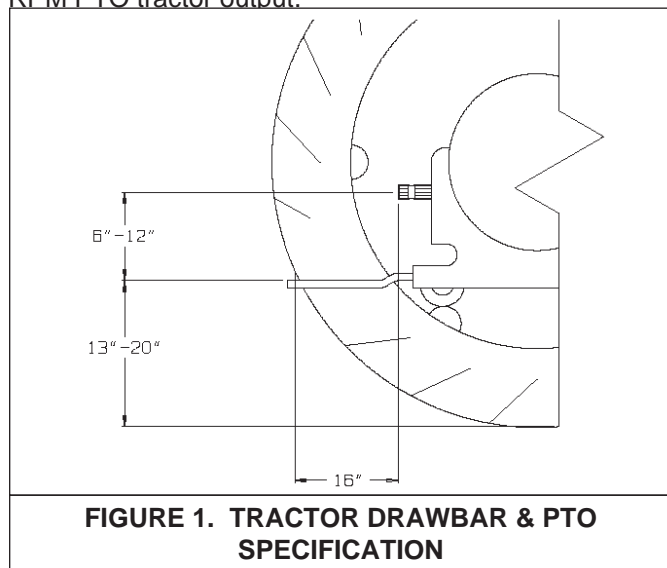
### WARNING

NEVER OPERATE SPREADER WITH ANY GUARDS OR SHIELDS REMOVED. FAILURE TO HEED MAY RESULT IN SERIOUS PERSONAL INJURY OR DEATH.

1. Completely lubricate the unit as described in the LUBRICATION Section.
2. Check and tighten the wheel lug nuts if required.
3. Check and maintain the tire pressure according to the manufacturer's recommendation.
4. Check the entire unit for loose bolts, damaged or loose hydraulic fittings and hoses or other damaged parts.
5. The tractor half of the PTO drive shaft assembly must be locked securely to the tractor output shaft.

## TRACTOR HITCH AND PTO REQUIREMENTS

The spreader is designed to be operated by a 1000 RPM PTO tractor output.



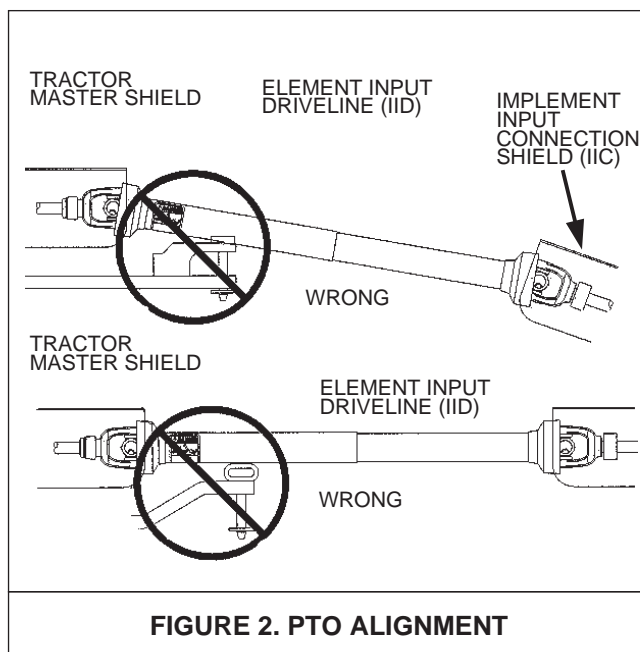
The PTO drive shaft assembly is designed to operate with tractors conforming to the industry standard shown on figure 1 for 1000 RPM PTO output.

### ADMA Recommendations:

A tractor drawbar equipped with a clevis hitch (hammer-strap) can cause interference with the PTO driveline IID (implement input driveline). This interference can cause serious damage to the IID or the IID telescoping members. The clevis hitch on the tractor must be removed.

If the implement (figure 2, top view) is attached to a tractor with a clevis hitch (hammer-strap) style drawbar, the hammer-strap must be removed to prevent damage to the IID guarding or the IID telescoping members.

If the implement (figure 2, lower view) is attached to a tractor with an offset in the drawbar, be certain it is in the down position to prevent damage to the IID guarding or the IID telescoping members.



## TRACTOR SIZE REQUIREMENTS

The spreader does not have brakes. Towing the spreader must be done safely. The ASAE (American Society of Agricultural Engineers) specifies that the towing vehicle should weigh at least 2/3 as much as the loaded implement to be reasonably safe towing at speeds up to 20 mph. This (20 mph) is also the maximum recommended towing speed for the spreader.

The loaded weight of your spreader will naturally vary with the moisture of the manure and you must consider that for your conditions. The loaded weight capacities as specified by the spreader manufacturer are as follows:

### Tractor Towing Size Requirements

Use the following chart for calculating the minimum tractor weight.

MODEL (struck level)	SPREADER EMPTY WEIGHT + LOAD = GW	MINIMUM TRACTOR WEIGHT UP TO 20 MPH
VB750 (478 ft <sup>3</sup> )	13,340+ _____ = _____	2/3 of spreader gross weight

### Material Estimated Weight Per Cubic Foot

Material	lbs / Cu. Ft.
Lime Sludge	110-115 LBS.
Dry Feedlot Manure	63-65 LBS.
Chicken Litter	63-65 LBS.
Cake Sludge	62-65 LBS.
Semi-Solid Manure	58-60 LBS.
Pen Packed Manure	30-35 LBS.
Liquid Manure	63-65 LBS.

SOURCE: ASAE

**NOTICE!** Heaped loads have significantly higher capacities resulting in increased weight and higher center of gravity, requiring extra precaution during operation.

## THEORY OF OPERATION

The spreader rear beaters are driven directly by the tractor PTO.

The spreader rear end gate and the apron are hydraulic driven. A single set of hydraulic hoses connected to the tractor hydraulic system is used.

A directional valve is incorporated in the spreader hydraulic system which directs hydraulic flow to the rear end gate only, when the gate is closed. With the gate closed, applying the tractor hydraulics will open the gate and as the gate opens, the directional valve is acted upon by the gate arm and will direct hydraulic flow to automatically start the apron drive motor.

When unloading is complete, the tractor hydraulic lever is reversed to lower the gate and when the gate is closed, the directional valve will stop hydraulic flow to the apron motor. Furthermore, a check valve in the apron motor circuit will prevent the apron drive motor from running backwards. The check valve will also prevent incorrect apron operation if the hydraulic hoses are accidentally reversed at the tractor.

## HYDRAULIC SYSTEM

### General

There are two hydraulic systems available for this spreader. Both systems are shipped for tractor closed center hydraulics. If using a tractor with open center hydraulics, instructions to convert the spreader system to open center are given on page 13. Most late model tractors are closed center systems. If in doubt, contact your tractor dealer for information.

The standard spreader hydraulic system does not include an on board flow control to regulate the apron speed. Instead, the tractor must have an adjustable flow control lever (turtle/rabbit icons) and this lever is used to regulate the spreader apron speed.

If your tractor does not have adjustable flow control, then your spreader must be equipped with the optional on board flow control system. This system includes a motorized flow control to regulate the spreader apron speed. The motorized valve is adjusted by an electric control box placed in the tractor cab and connected to the tractor 12 VDC power source. See figure 5.

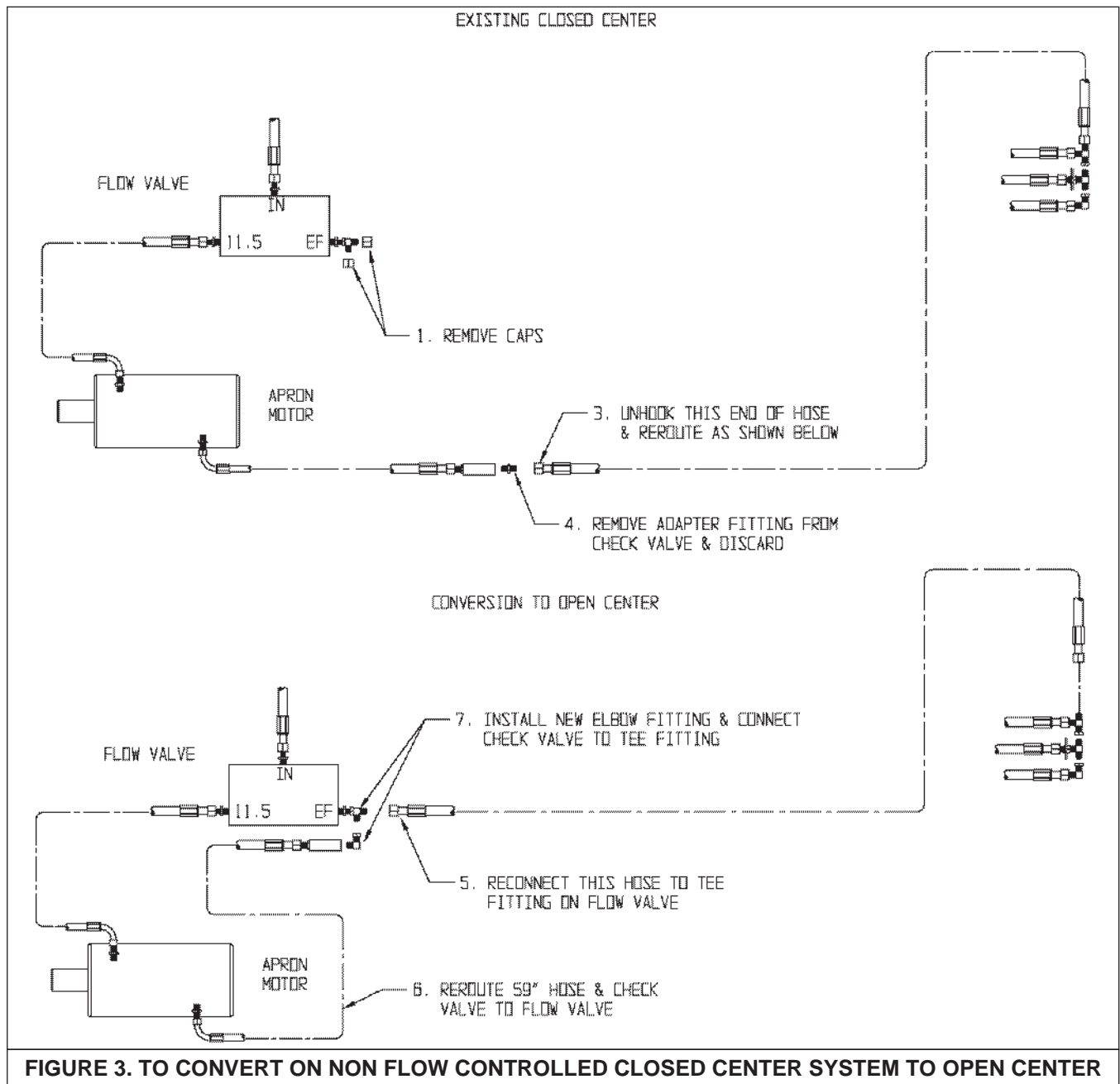
## CONVERTING A SPREADER FROM CLOSED CENTER TO OPEN CENTER

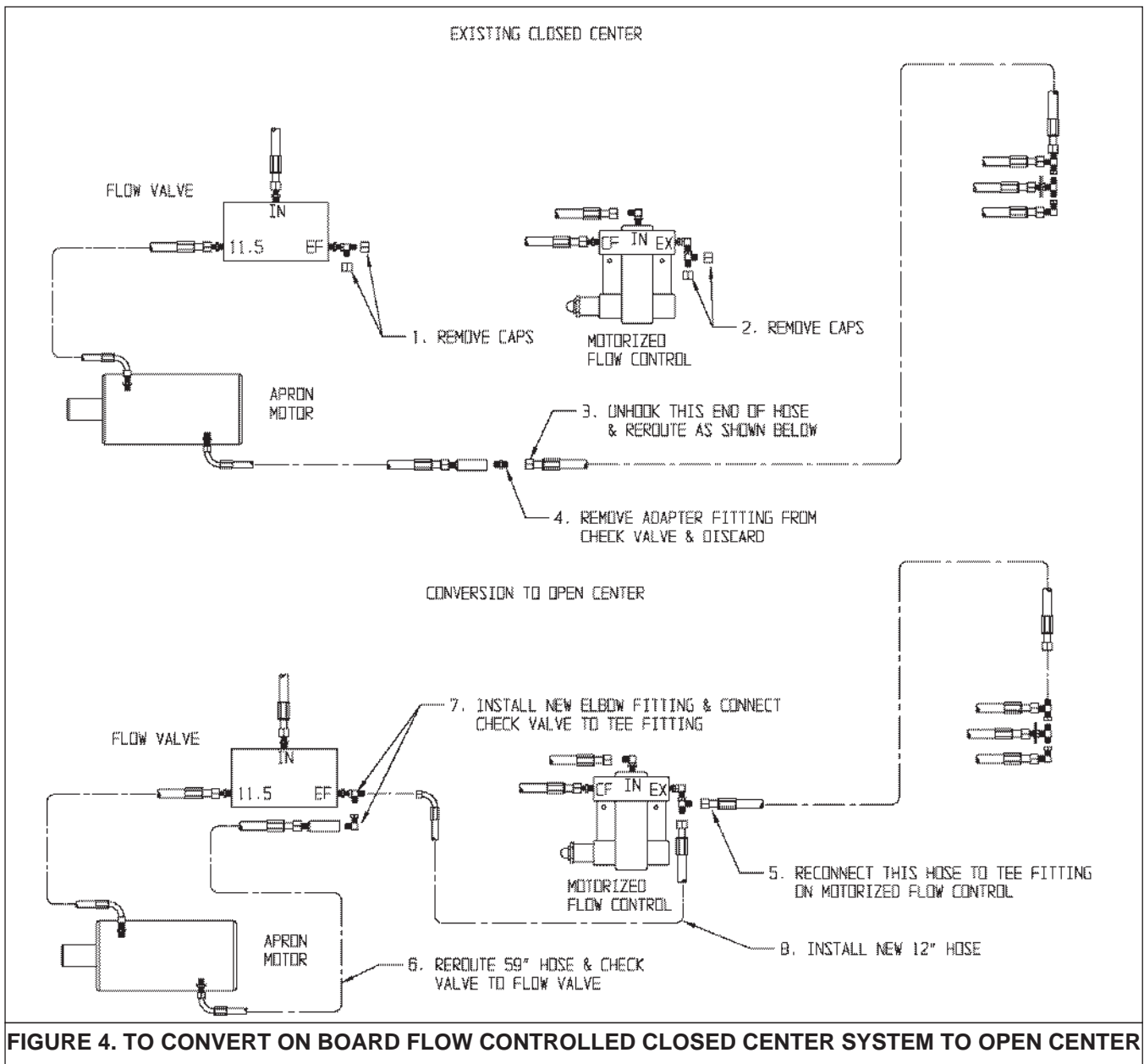
### WARNING

ESCAPING HYDRAULIC FLUID UNDER PRESSURE CAN PENETRATE THE SKIN AND CAUSE SERIOUS INJURY. RELIEVE ALL PRESSURE FROM THE HYDRAULIC SYSTEM BEFORE CONNECTING OR DISCONNECTING THE LINES OR MAKING REPAIRS. CHECK ALL HOSES AND FITTINGS BEFORE START-UP AND PERIODICALLY DURING OPERATION.

Most late model tractors use a closed center hydraulic system which only pumps oil as required. Some other tractors may have an open center system which pumps oil continuously, in which case provision must be made to allow excess flow back to the tractor reservoir. This is done by converting your spreader to open center as instructed in the following.

If you are not sure of your system, contact your tractor dealer.





**NOTICE!** For tractors with closed center system and load sensing that has a priority flow circuit that is manually adjustable, your spreader must have the optional on board flow control and it must be converted to an open center system. This is not a tractor lever operated system.

**To Convert Standard Non Flow Controlled Closed Center System To Open Center**

See figure 3 for instructions in suggested numbered sequence.

A new elbow fitting is required, see page 52 for part numbers.

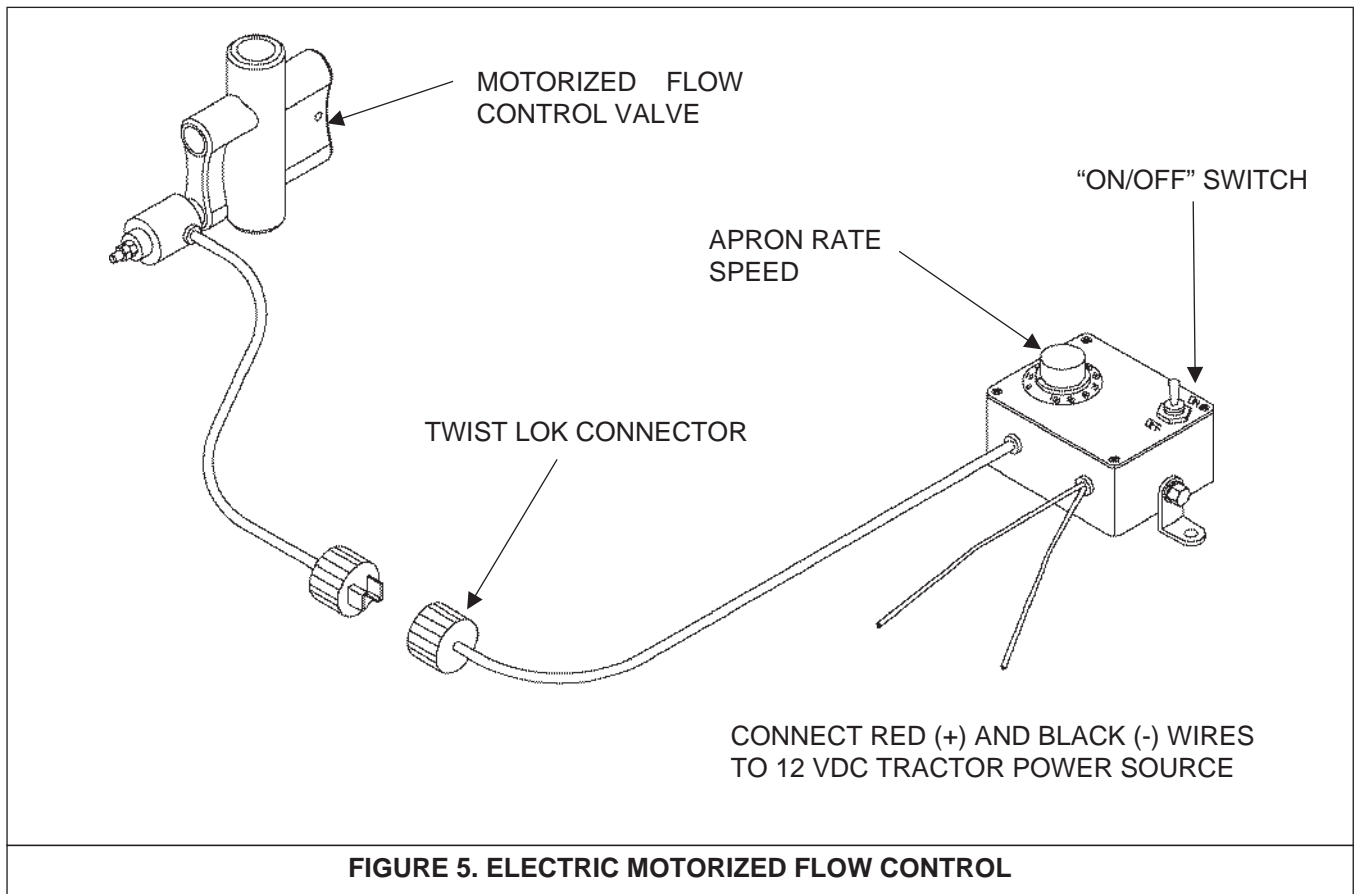
**To Convert Optional On Board Flow Controlled Closed Center System To Open Center**

See figure 4 for instructions in suggested numbered sequence.

A new elbow fitting and 12" are required, see page 54 for part numbers.

## ELECTRIC CONTROL INSTALLATION FOR OPTIONAL ON BOARD FLOW CON- TROLLED SYSTEM

- .1 Locate the controller on the tractor where it is accessible to operate.
- .2 Connect the electrical leads to the tractor 12VDC power source, figure 5.
- .3 When hooking up the spreader, connect the controller to the motorized flow control valve at the twist lok connector.



**FIGURE 5. ELECTRIC MOTORIZED FLOW CONTROL**

## TRANSPORTING

### General

Check for traffic constantly. Be sure you can see that no one is attempting to pass you and that all traffic is sufficiently clear from you before making any turns.

### WARNING

BE SURE THE SLOW MOVING VEHICLE SIGN IS INSTALLED ON THE REAR OF THE SPREADER FOR TRANSPORTING ON ROADWAYS. KEEP THIS SIGN AND ALL REFLECTIVE DECALS CLEAN. FAILURE TO HEED MAY RESULT IN SERIOUS PERSONAL INJURY OR DEATH.

### CAUTION:

REGULARLY CLEAN OFF THE REFLECTIVE TAPE AT THE REAR AND SIDES OF THE SPREADER WHEN TRANSPORTING IT ON THE HIGHWAY.

### WARNING

DO NOT TOW AT SPEEDS GREATER THAN 20 MPH. FAILURE TO HEED MAY RESULT IN SERIOUS PERSONAL INJURY OR DEATH.

Operating speed is dictated by the terrain over which you are traveling. Always use caution. Avoid traveling on slopes or hills that are unsafe. Also beware of slippery conditions such as traveling over areas previously spread with manure. If possible, avoid spreading over areas where manure has been previously applied.

If you will travel on public roadways and it is legal to do so, you must know all rules governing such operation. This will include lighting and brake requirements in addition to traffic rules. You may also be required to install a safety chain on the spreader.

### Use Safety Chain

### CAUTION:

A SAFETY CHAIN SHOULD BE INSTALLED TO RETAIN THE CONNECTION BETWEEN TRACTOR (OR OTHER TOWING VEHICLE) AND SPREADER WHENEVER TRAVELING ON PUBLIC ROADS. A SUGGESTED ATTACHMENT IS ILLUSTRATED ON FIGURE 6.

The chain must be strong enough to hold the weight of the loaded spreader. If using a grab hook at the end(s) of the chain to secure the chain to itself, a hook latch must be installed.

The length of the safety chain is not to be any longer than necessary to turn without interference. If any chain links or attachment hardware are broken or stretched, repair before using. Store chain so it does not corrode or become damaged. Do not use this chain for other implements because the strength and length of chain may not be adequate. Identify this chain for use on this particular spreader.

Safety chain designed for this spreader can be ordered on page 24.

### Use Lights

Optional lights (see page 48) are offered for your spreader. Lights are recommended for any spreader operated on public roads and may be a requirement.

If equipped with lights, plug the electric plug into the tractor trailer electrical receptacle.

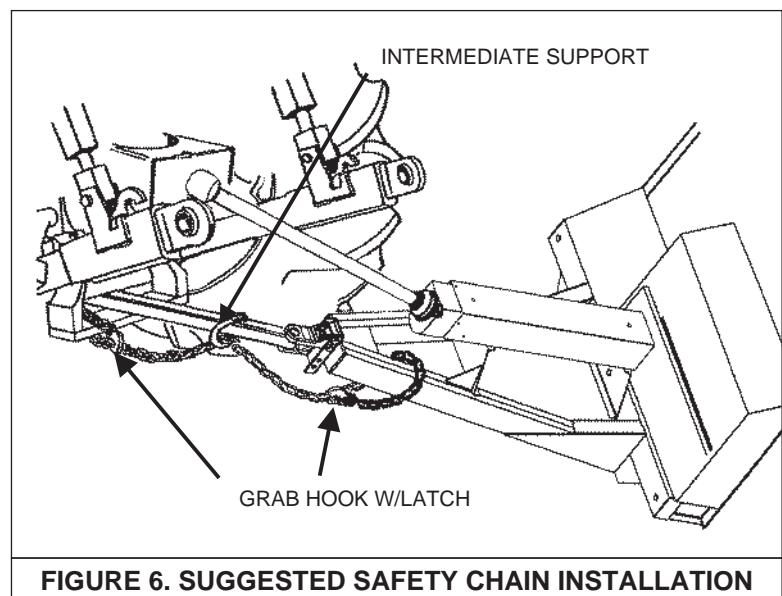


FIGURE 6. SUGGESTED SAFETY CHAIN INSTALLATION



# OPERATION

## DANGER

NEVER ENTER THE SPREADER BOX FOR ANY REASON WITHOUT FIRST DISCONNECTING PTO SHAFT FROM TRACTOR. DO NOT ALLOW OTHERS IN THE BOX. ROTATING BEATER CAN DISMEMBER OR KILL.

## TRACTOR HOOKUP



FIGURE 7. SPREADER HOOK UP

## CAUTION

DO NOT USE JACK EXCEPT WHEN SPREADER IS EMPTY. JACK WILL NOT SUPPORT ADDED WEIGHT FROM LOAD. UNBALANCED WEIGHT MAY RESULT IN UNEXPECTED "TIP UP" OF THE SPREADER.

1. Hook the spreader hitch to the tractor drawbar with 1 3/8" secured hitch pin.
2. Raise the jack off the ground. Remove the jack hub pin and rotate the jack to horizontal storage position and secure with the pin, figure 7.
3. Connect the PTO drive shaft to the tractor PTO output shaft and be sure it is locked to the tractor shaft.
4. Connect the two hydraulic hoses from the spreader a set of remote ports on the tractor.

**NOTICE!** The return line on the spreader apron motor has a check valve in it so that the apron can not be operated in the wrong direction. If the hoses are reversed, the apron will not operate and the hoses should be switched.

5. If you have an optional on board flow control with electric control system, plug the twist lok connectors together. See figure 5 for mounting instructions.

## LOADING

1. Check that the end gate is closed, figure 8. When the spreader is parked for loading, shift the tractor to neutral or park and set the brakes. The moisture content of the manure will determine how full the spreader can be loaded so that no manure spills out.
2. You will probably be able to load solid manure at least level with the top of the box while semi liquid and liquid slurries will have to be less than full in the spreader box.

**NOTICE!** It is unlawful to allow slurry to splash or leak onto public roads.

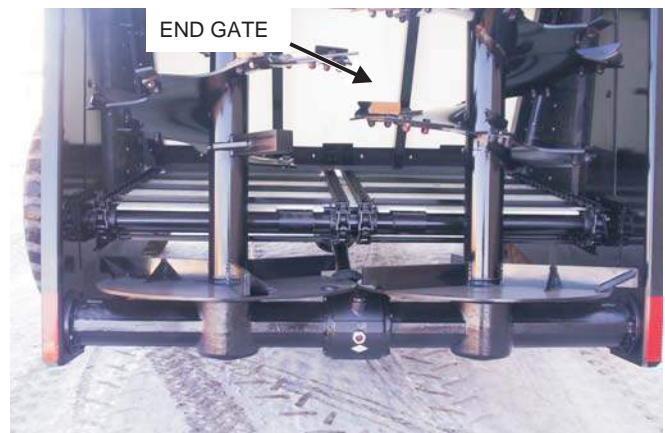


FIGURE 8. HYDRAULIC END GATE, VIEW FROM REAR

## UNLOADING

## DANGER

KEEP AWAY AND KEEP OTHERS CLEAR OF ROTATING BEATERS AT REAR OF SPREADER. SERIOUS INJURY OR AMPUTATION COULD RESULT.

## WARNING

MAKE CERTAIN EVERYONE IS CLEAR OF EQUIPMENT BEFORE APPLYING POWER. FAILURE TO HEED MAY RESULT IN SERIOUS PERSONAL INJURY OR DEATH.

The rear beaters have been designed and tested to provide the best spread pattern for most liquids and semi solid manure. However, the pattern will vary for each specific condition. The factors that contribute most to differing patterns will be moisture content and the amount and length of bedding material. For most typical conditions, the spread pattern should be uniform and about 30 feet wide or more for cattle manure and about 20 feet wide for poultry manure. Plan your spreading patterns so you do not have to travel over previously spread manure which will be slippery, resulting in poor traction. Traction on wet grass is also poor. When the resulting pattern may require that you overlap during spreading, use precautions on slopes and hills where you will experience a loss of traction by traveling over ground with previously spread manure.



### CAUTION

DO NOT OPERATE APRON CHAIN WITHOUT RAISING END GATE FIRST. FAILURE TO HEED MAY RESULT IN EQUIPMENT DAMAGE.

1. When you are ready to begin spreading application on the field, slowly engage the tractor PTO clutch and then increase PTO to operating speed.
2. Open the hydraulic end gate, figure 8, by applying the tractor hydraulic lever. This can be done while traveling forward to avoid a heavier application at the edge of the field than desired.
3. When the end gate begins to open, the apron drive will start automatically.
4. For standard non flow control systems, regulate the apron speed with the tractor hydraulic system adjustable flow control lever (rabbit/turtle icons).
5. For optional on board flow control with electric control box, turn the electric control to "ON". Turn the knob CW to increase or CCW to decrease application rate. Return switch to "OFF" when spreading is completed, figure 5.
6. For solid manure, start the apron at a slow rate of speed.
7. Start application onto the field. Increase the speed of apron chain for a heavier application.

**NOTICE!** Do not feed frozen manure at a rate too fast. The apron drive can feed faster than the beaters can expel the material. When frozen chunks are present,

reduce apron speed to approximately 1/3, to allow the beaters time to grind the chunks into small pieces.

8. Further control of the application rate is possible by the relationship of tractor engine speed to ground speed (transmission gear selection). For optimum trouble free performance it is recommended to operate at or near engine PTO speed.
9. When the spreader is empty, stop the PTO.
10. Reverse the tractor hydraulic lever. This will close the gate and stop the apron.



### MANDATORY SAFETY SHUTDOWN PROCEDURE

BEFORE unclogging, cleaning, adjusting, lubricating or servicing the unit:

1. Disengage the tractor PTO.
2. Shut off the tractor engine, remove the ignition key and take it with you.
3. Wait for all movement to stop.
4. Remove the Telescoping PTO Drive and ALL power connections from the tractor.

ONLY when you have taken these precautions can you be sure it is safe to proceed. Failure to follow the above procedure could lead to death or serious bodily injury.

# MAINTENANCE, ADJUSTMENTS & LUBRICATION



## WARNING

DISCONNECT PTO DRIVE SHAFT AND HYDRAULIC HOSES BEFORE CLEANING, ADJUSTING OR SERVICING THIS MACHINE. FAILURE TO HEED MAY RESULT IN SERIOUS PERSONAL INJURY OR DEATH.



## WARNING

APRON STARTS AUTOMATICALLY WHEN GATE OPENS.

## WHEEL AND TIRE MAINTENANCE AND REPAIR

**WHEELS:** Check periodically. The wheel studs should be torqued to 297 foot pounds.

### VB750 TIRE PRESSURE:

75 psi, recommended pressure, 77 psi max.

## LOCK RING RIM



## WARNING

NEVER INFLATE BEYOND RIM OR TIRE MANUFACTURER'S APPROVED PSI RATING. WHILE INFLATING, STAY OUT OF THE TRAJECTORY & STAND CLEAR OF TIRE/WHEEL ASSEMBLY. A TIRE BLOW OUT OR RIM/WHEEL FAILURE CAN CAUSE SERIOUS INJURY OR DEATH.

Removing, replacing and repairing industrial tires and rims with lock rings can be dangerous without proper tools, equipment and training to perform this service. It is recommended that this work be performed only by a qualified tire repair shop.



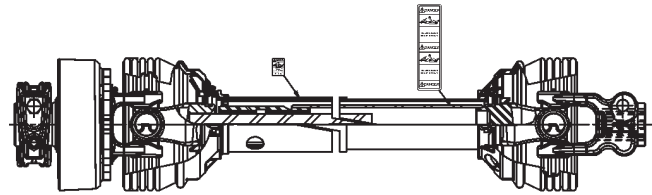
## DANGER

IF THE LOCK RING SHOULD BLOW OFF, IT AND OTHER PARTS COULD FLY OFF WITH ENOUGH FORCE TO INJURE OR KILL A PERSON. NEVER STAND IN THE POTENTIAL BLOW OUT AREA AND KEEP OTHERS AWAY.

## REAR-AUTOMATIC OVER RUNNING CLUTCH

(See figure 9)

1. If the PTO drive becomes over loaded, the clutch will disengage, causing an audible clattering noise.



VB750-UniversalJointOverrunningClutch-Maint.odr

FIGURE 9. AUTOMATIC OVER RUNNING CLUTCH

2. If the clutch disengages, stop tractor hydraulic flow. Disengage the PTO and allow it to coast down. The clutch will re-engage at slow speed if the over load has subsided.
3. At slow speed, re-engage the PTO and allow the beaters to run freely. Restart the hydraulic flow and resume operation.
4. If the clutch will not re-engage, then the beaters are still over loaded or plugged. It will be necessary to manually unplug the beaters to remove the clog. A foreign object such as a rock may be found to be the cause of over load.
5. When the clog has been cleared, restart the tractor and at idle speed, engage the PTO until the beaters run freely. Increase the PTO speed and then engage the hydraulic flow to operate the apron drive and resume operation.



## MANDATORY SAFETY SHUTDOWN PROCEDURE

BEFORE unclogging, cleaning, adjusting, lubricating or servicing the unit:

1. Disengage the tractor PTO.
2. Shut off the tractor engine, remove the ignition key and take it with you.
3. Wait for all movement to stop.
4. Remove the Telescoping PTO Drive and ALL power connections from the tractor.

**ONLY** when you have taken these precautions can you be sure it is safe to proceed. Failure to follow the above procedure could lead to death or serious bodily injury.

## ADJUSTMENTS

### Apron Chain

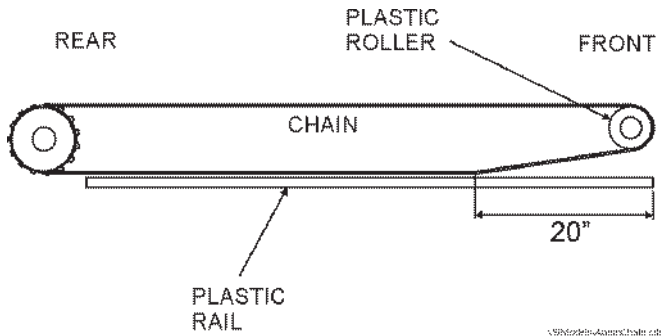


FIGURE 10. ADJUST APRON CHAIN

(A1) The apron chain is adjusted by (4) adjuster bolts located on the front of the box frame, figure 13. Adjust the 1-1/8" bolts so the chain is elevated above the plastic slide rails for 36" as illustrated on figure 10. When there is no more adjustment left on the adjuster screws, loosen the nuts on the bolts and push the bolts in as far as they will go. Then remove a link from each chain and readjust the apron chain

**NOTICE!** Chain must run centered on the front nylon rollers.

### LUBRICATION

(L1) Grease bearings on top of Vertical Beater one pump every 8 hours, both sides by grease lines. Figures 11 and 12.

(L2) Maintain oil level in apron drive reducer at check level plug, accessible at right, rear side. It holds 6 Qts. When required, refill with SAE 85-140 Moly Fortified gear lube or Synthetic SAE 75-90 gear lube. Figure 11.

(L3) Grease 3 bearings on the drive shaft under spreader box, one pump every 8 hours. These bearings are accessed by grease lines, 3 places on RH side of machine. Figures 11 and 14.

(L4) There are two bearings at the front of the driveline connecting to the PTO shaft. Grease these bearings one pump every 8 hours. Figure 13.

(L5) Grease Pivot Hitch 2 pumps every 8 hours, each grease zerck. Figure 13.

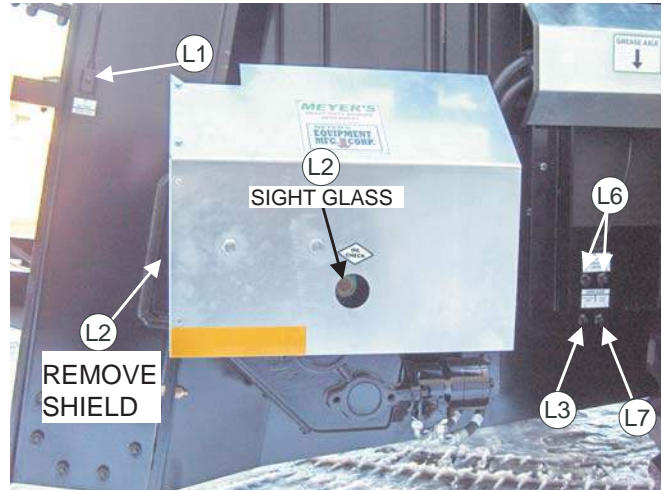


FIGURE 11.

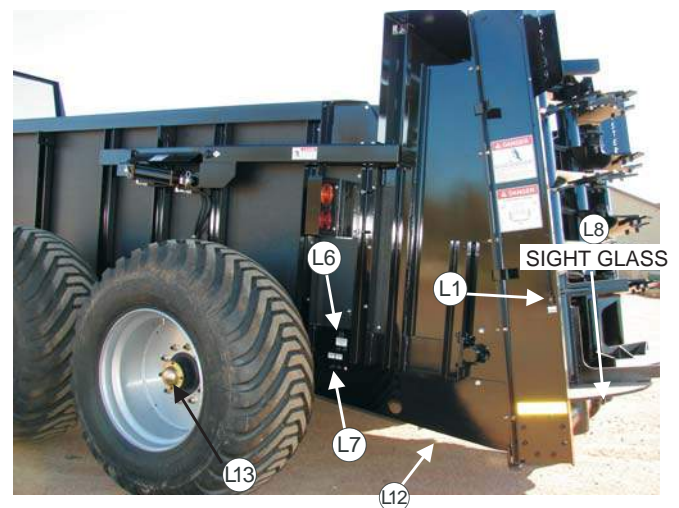


FIGURE 12.

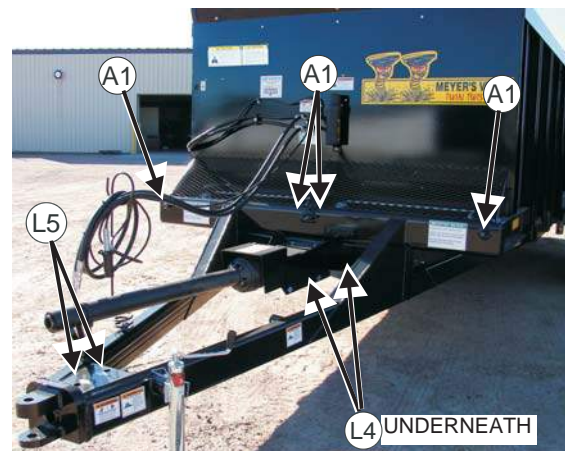
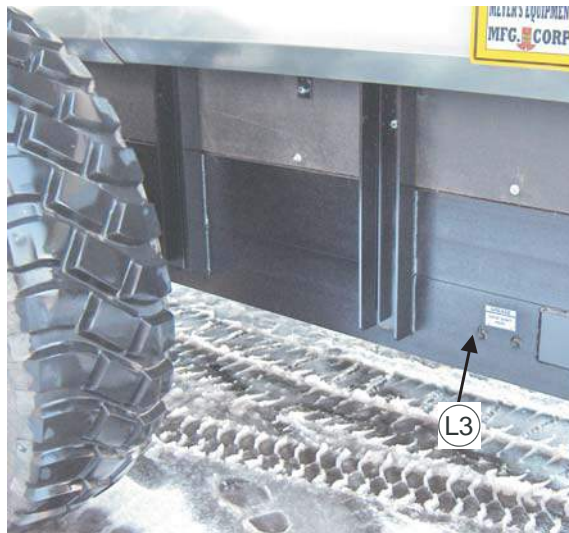


FIGURE 13.



**FIGURE 14.**

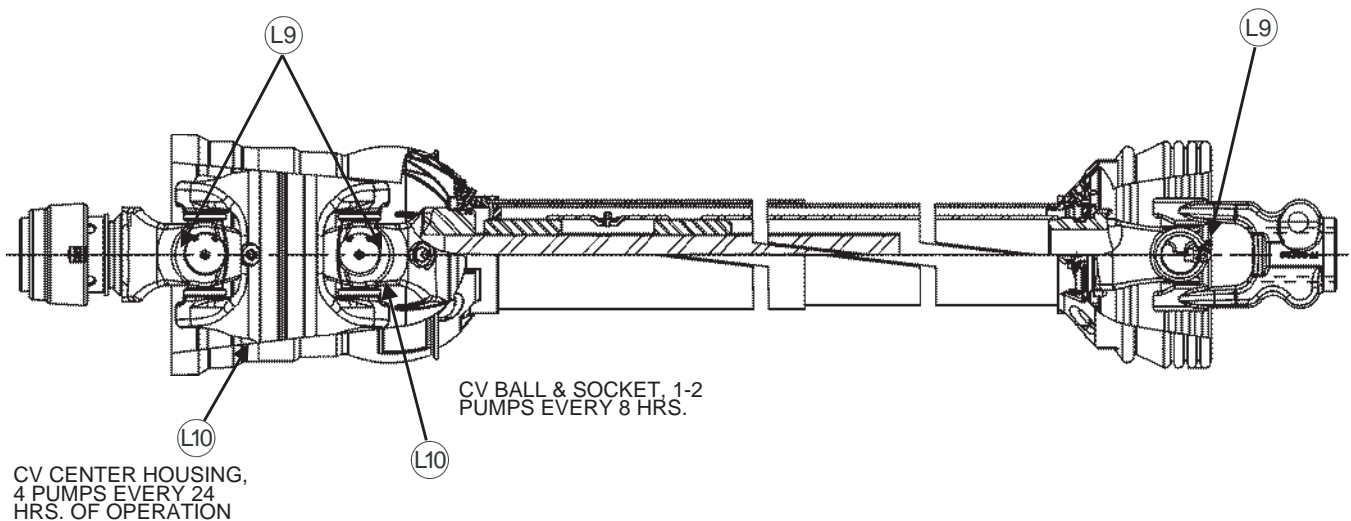
(L6) Grease the apron drive shafts, both sides of the spreader by the grease lines, 5 pumps every 8 hours. Figures 11 and 12.

(L7) Grease the axle at both sides of the spreader by the grease lines, 10 pumps every 8 hours. Figures 11 and 12.

(L8) Maintain oil level in vertical beater gearbox to site gauge level. It holds 18.5 Qts. When required, refill with SAE 85-140 Moly Fortified gear lube or Synthetic SAE 75-90 gear lube. Figure 12.

(L9) Grease cross bearings on yoke (both ends of PTO shaft) 1 pump every 8 hrs. Grease telescoping shaft through slot in center of guard, 4-5 pumps every 8 hrs. Figure 15.

(L10) Special attention should be paid to lubricating the constant velocity PTO drive shaft assembly. See figure 15.



**FIGURE 15. PTO LUBRICATION**

(L11) Grease the over running clutch 3-4 pumps every 8 hours. Figure 16. Located at rear of spreader.

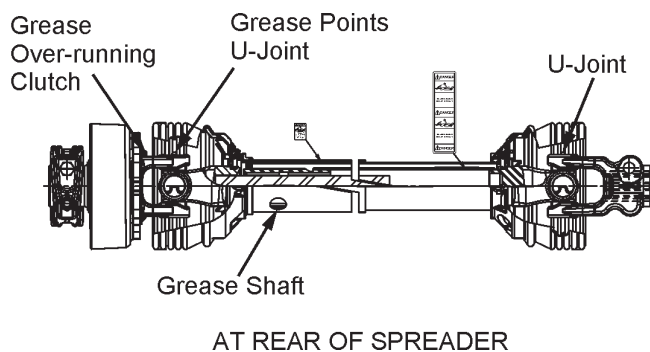


FIGURE 16.

Grease cross bearings on yoke (both ends of connecting driveline to vertical beater). 1 pump every 8 hrs. This is accessible below spreader box, 1 zerk on overrunning clutch. See figure 16.

(L12) Remove the wheels and hubs annually. Figure 12. Clean out old grease and repack bearing cones with quality EP grease. Put a ¼" film of grease on the bearing cups and reassemble. If your hubs have grease zerks, do not lube them. Grease builds up in the hub and eventually will damage the seal when expansion from heat occurs. Figure 12.

**NOTICE!** RE-LUBRICATE AT REGULAR INTERVALS TO PREVENT DAMAGE TO THE BEARINGS. RE-LUBRICATION INTERVALS ARE VERY DIFFICULT TO DETERMINE, DEPENDING ON USAGE. THE GEARBOX HOUSINGS SHOULD BE KEPT APPROXIMATELY 1/3 TO ½ FULL WHICH CORRESPONDS WITH THE CHECK PLUG OR GAUGE.

## CLEANING AND STORAGE

### WARNING

DISCONNECT PTO DRIVE SHAFT AND HYDRAULIC HOSES BEFORE CLEANING, ADJUSTING OR SERVICING THIS MACHINE. FAILURE TO HEED MAY RESULT IN SERIOUS PERSONAL INJURY OR DEATH.

### WARNING

APRON STARTS AUTOMATICALLY WHEN GATE OPENS.

Before storing this spreader for an extended period of time, perform the following:

1. Allow the spreader to completely clean out the last load.
2. Thoroughly hose off all manure from the outside of the spreader and the inside of the box, particularly getting the end gate mechanism clean. The water can be drained into your manure storage pit or if the gate is left closed, the water can be taken to the field and spread.
3. If pressure washing spreader, be careful not to wash directly on or too close to any bearing seals. The high pressure can destroy the seal and force water into the bearing causing it to rust and fail. Avoid pressure washing painted areas of the spreader too close with the washer as the pressure can strip paint on scratched areas caused from scraping clean.
4. Manure is very acidic and should not be left on painted areas for a long period of time because it will lift paint from the metal. Unpainted metal will corrode causing holes to rust through metal guards or even fall off the machine. If this should happen, guards must be replaced immediately.

### WARNING

DO NOT OPERATE SPREADER WITH ANY GUARD OPEN OR MISSING. ROTATING PARTS CAN DISMEMBER OR KILL.

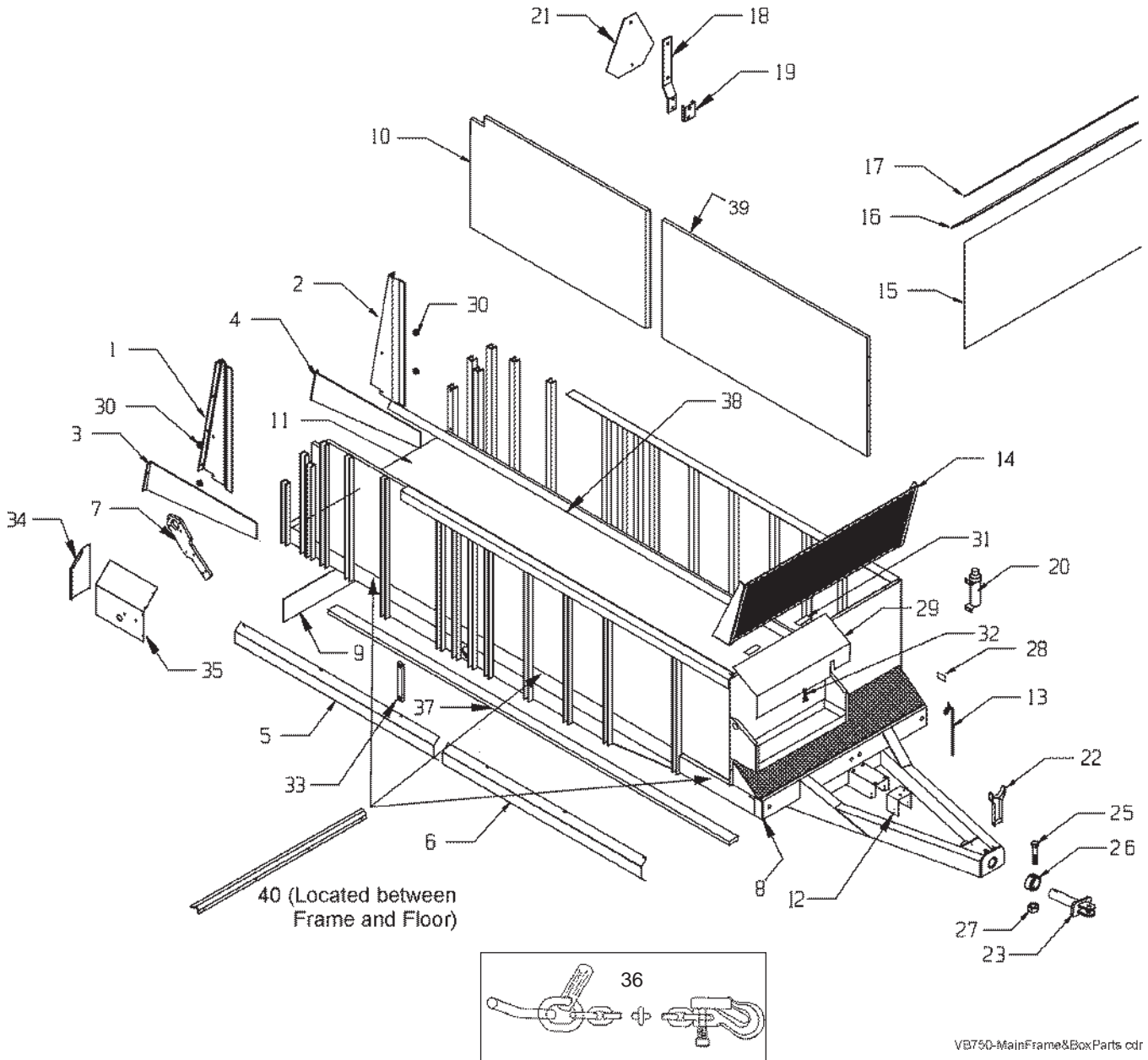
5. After cleaning, lube the spreader to exclude moisture from bearings and prevent condensation from forming during storage. Apply oil to roller chain drives.
6. This is a good time to inspect all adjustments and check for parts that need repair or replacement. Performing these tasks now will guarantee that the spreader is ready for use at the beginning of the next season.

This Page Intentionally Blank.

# REPAIR PARTS

## MAIN FRAME & BOX PARTS

Models VB750



VB750-MainFrame&BoxParts.cdr



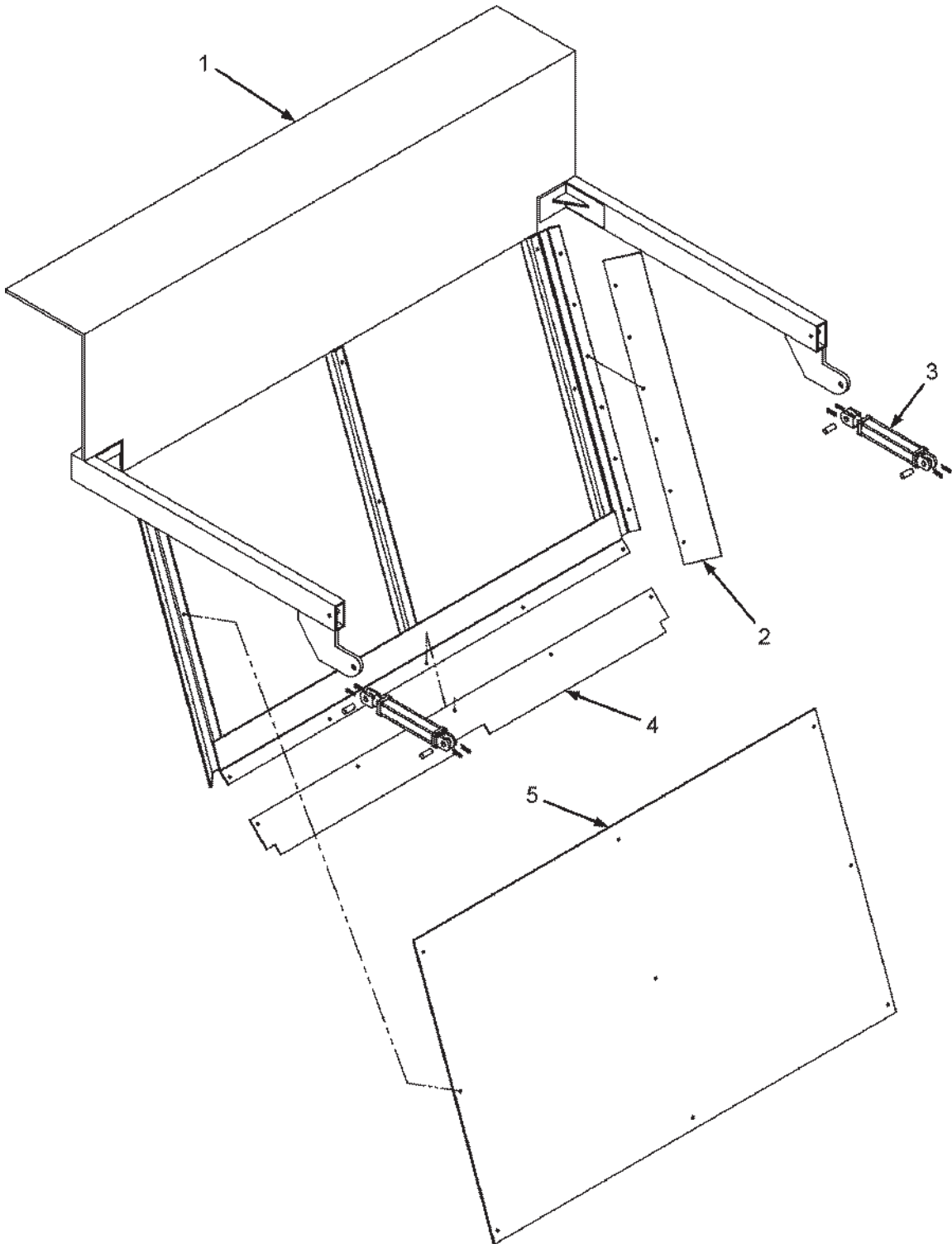
## MAIN FRAME & BOX PARTS

*Models VB750*

KEY	PART NO.	QTY	DESCRIPTION
1	VB-0001-09	1	VB-Bracket-RH
2	VB-0001-09	1	VB-Bracket-LH
3	VB-0004-09	1	VB Bottom Bracket-RH
4	VB-0004-09	1	VB-Bottom Bracket-LH
5	VB-00022	1	Hose Guard - Rear 1/2
6	VB-00023	1	Hose Guard - Front 1/2
7	VB-00016	1	Gearbox Torque Arm
8	VB-00026	1	Frame, Main
9	VB-00132	1	Belt Deflector
10	E00010-11-R	2	Left and Right Rear Side Panel 46" x 101"
11	E00019-550/700	1	Floor Complete, 78"x225"
12	VB-00129-2-08	1	Shield, Front Drive Shaft w/ Hinge
13	E00026	1	Hydraulic Hose Support
14	VB-00024	1	Front Splash Pan/Rock Guard
15	E20028	1	Front Gate Insert 1/4" x 39-3/4" x 81" Poly
16	E00005-09	1	Belt, Bottom Front Gate (79.5")
17	E00003	1	Bar, Bottom Front Gate
18	E21648	1	SMV Spade Mounting
19	E21649	1	SMV Socket Mounting
20	E21650	1	Manual Holder w/ Decal
21	PM10-11-05	1	SMV Sign
22	E21658	1	PTO Stand w/Rubber Strap
23	E21659-11	1	Inner Hitch Assembly
24			
25	E21661	1	HHCS, 3/4-10 x 5, GR8
26	E21662-11	1	Collar
27	E21663	1	Nut, 3/4-10, Nylon Lock
28		1	Serial Number Plate
29	E00303-00	1	Shield, Front
30	VB-00025	4	Spacer
31	E20942	2	Hinge, Shield
32	E00016	1	Lock Assv
33	E00007	2	Bar, Axle Retainer
34	VB-00131	1	VB Back Gear Box Guard
35	VB-00130	1	VB Top - Front Gearbox Guard
36		1	Safety Chain, Towing, 40000 lb., Optional
37	VB-00208	4	Apron Slide Rails, 208"
38	E21664	2	Poly Floor Chain Spacer, 211"
39	E00010-11-F	2	Left and Right Front Side Panel 46" x 101"
40	3600-VB750-10	3	Floor Hold Down

# HYDRAULIC END GATE & RELATED PARTS

Models VB750



VB750-HydraulicEndGate.cdr

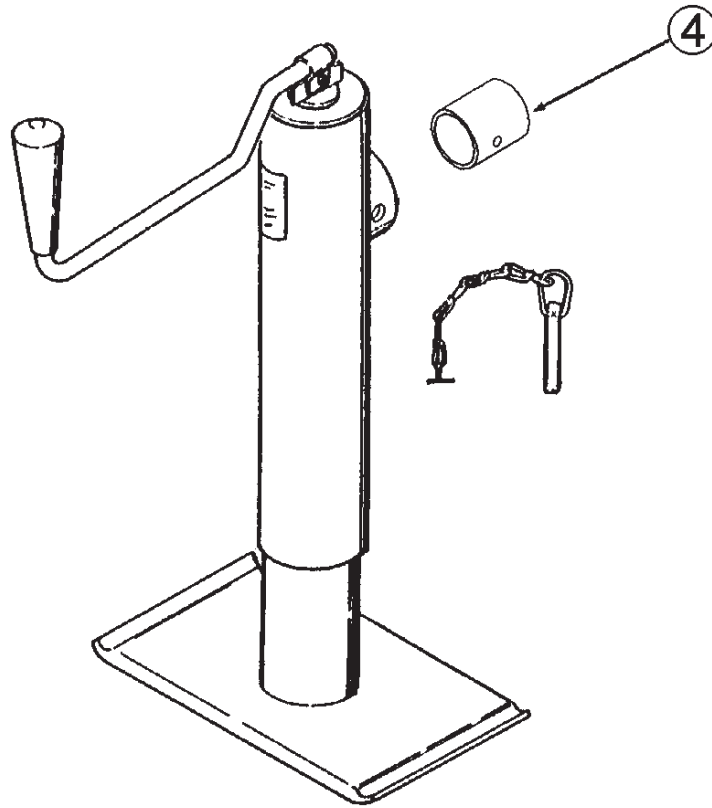
## HYDRAULIC END GATE & RELATED PARTS

*Models VB750*

KEY	PART NO.	QTY	DESCRIPTION
1	VB-00205	1	Gate, End Only
2	E00037-96	2	Belt, Side End Gate
3	REF.	2	Cylinder, End Gate <i>(See separate listing)</i>
4	E00039-09	1	Belt, Bottom End Gate
5	E20128	1	End Gate Insert 1/2" x 29-1/2" x 71" Poly

**NOTE:** See appropriate diagram on pages 50-56 for end gate hydraulic parts.

# JACK ASSEMBLY

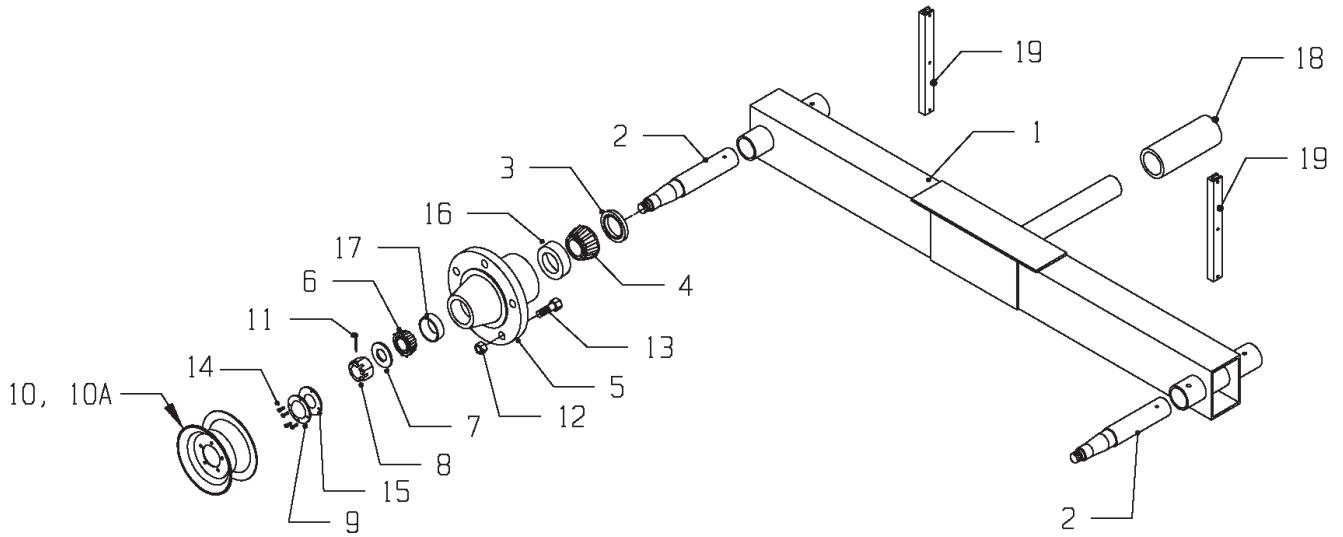


## JACK ASSEMBLY

KEY	PART NO.	QTY	DESCRIPTION
	E00053	1	Jack Assembly
4	E00057	1	Weld on Mount
	E20228		

# AXLES, WHEELS, SPINDLES AND RELATED PARTS

Models VB750



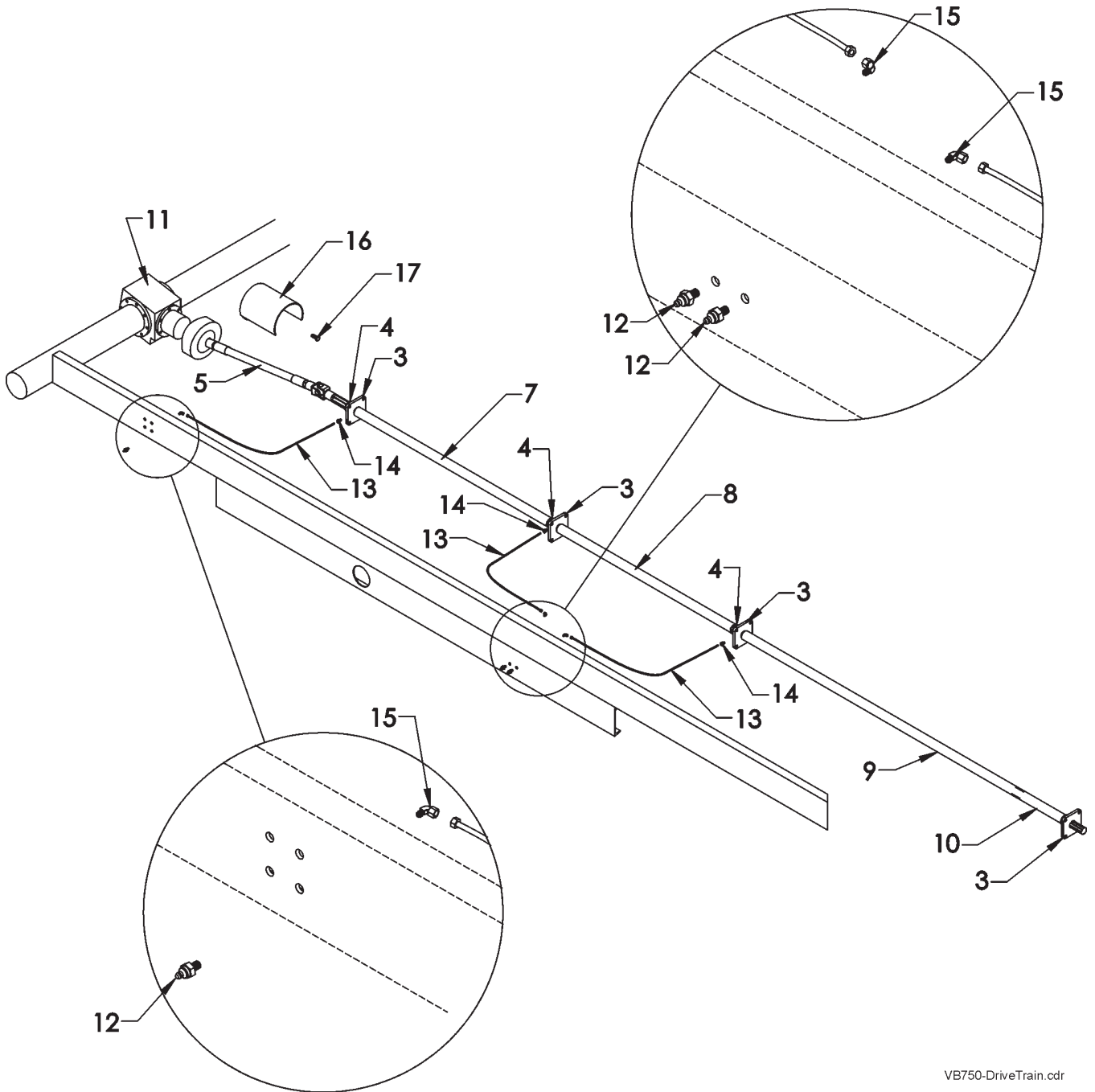
## AXLES, WHEELS, SPINDLES AND RELATED PARTS

*Models VB750*

KEY	PART NO.	QTY	DESCRIPTION
1	E00170-VB	2	Arm Assembly
2	E00171-VB	4	Spindle 3-3/8" x 20-1/2"
	VB-00148	4	Optional Spindle, 3 3/8" x 23 3/4", For 600/55 x 26.5 Tire
3	E00172-VB	4	Seal, Hub,33772
4	E00173-VB	4	Bearing, Inside Wheel, 33275
5	E00176-VB	4	Hub, 873
6	E00177	4	Bearing, Outside Wheel, 460
7	E00178	4	Washer
8	E00179	4	Nut, Spindle
9	E00180	4	Cap, Hub Dust
10	E00181-VB	4	Wheel (Standard)
10A	VB-00149	4	Wheel, 26.5 x 20", 10 Bolt (Optional)
11	E00182	4	Pin, Cotter
12	E00183	40	Nut, Wheel Stud
13	E00184	40	Stud, Wheel
14	E00185	16	Hub Cap Bolts
15	E00186	4	Gaskets
16	E00174-VB	4	Cup, Inside, 33462
17	E00175	4	Cup, Outside, 453A
18	E00AX700	2	Bushing
19	E00WS15	4	Guide, Poly
	E20528		

# 1 3/4" DRIVE TRAIN

Models VB750



VB750-DriveTrain.cdr



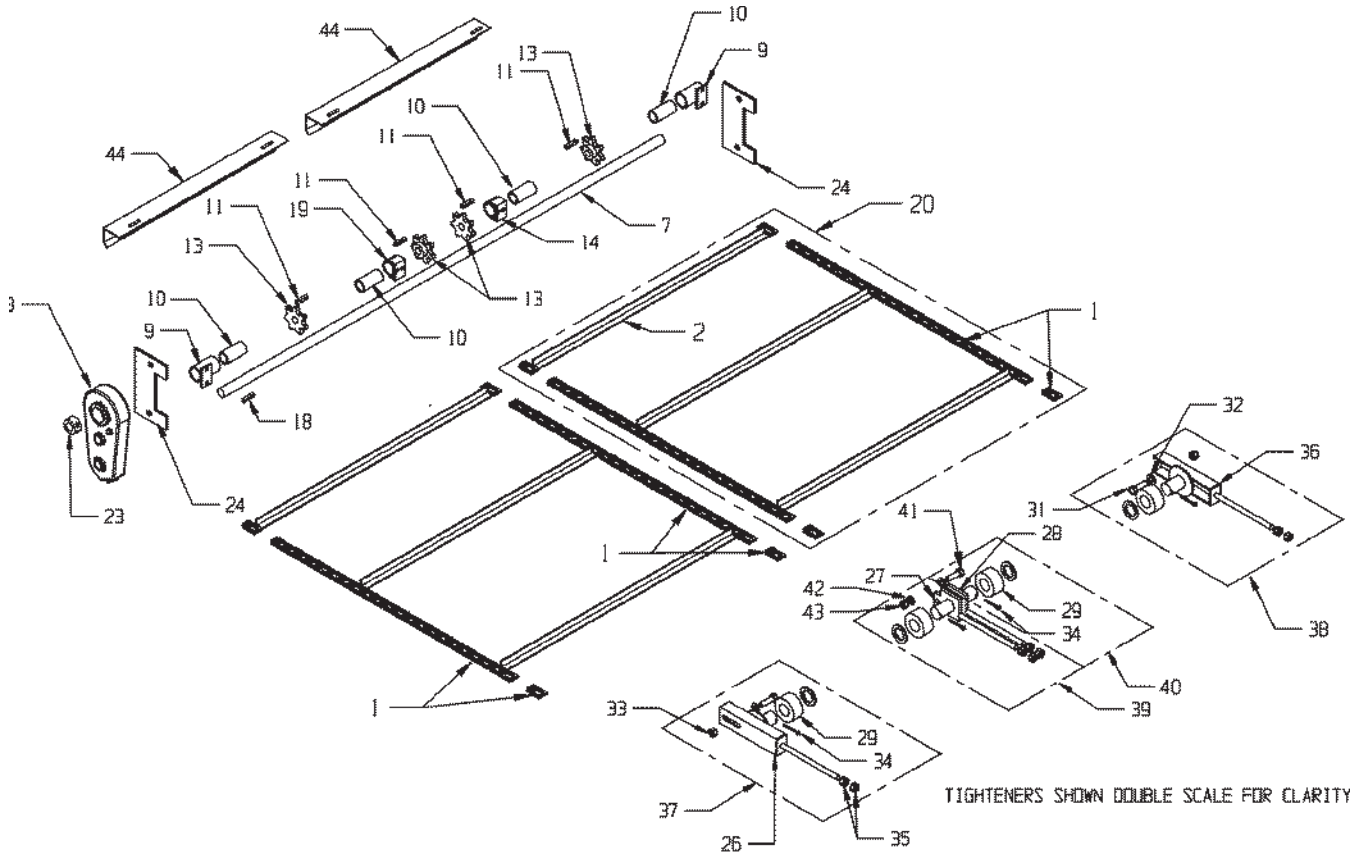
# 1 3/4" DRIVE TRAIN

*Models VB750*

KEY	PART NO.	QTY	DESCRIPTION
1	VB-700027-175	1	VB-Driveshaft, 1 3/4" Splined Both Ends
2	E00298-08	2	Bearing, RAK 1 3/4
3	VB-00028-08	3	Bearing, TCJ 1 3/4
4		5	Collar, N/A
5	VB-00029-11	1	Driveshaft, PTO Rear
7		1	Guard, Shaft, 56 1/8"
8		1	Guard, Shaft, 50 5/8"
9		1	Guard, Shaft, 78 3/4"
10		1	Guard, Shaft, 12"
11		Ref	VB Gearbox
12	E20730	3	Grease Zerk, 1/8 NPT Str.
13		3	1/8" Copper Tubing - Order By The Foot
14	VB-00030	3	BCMP M Connector 1/8T x 1/8M Comp - Straight
15	VB-00031	3	BCMP MELBW 1/8T x 1/8M Brass Comp 90° Ell
16	VB-00129	1	Guard, VB Driveshaft
17		4	Bolt

Call w/ Length, 2" ID

# APRON & RELATED PARTS FOR STANDARD 67P11 CHAIN *Models VB750*



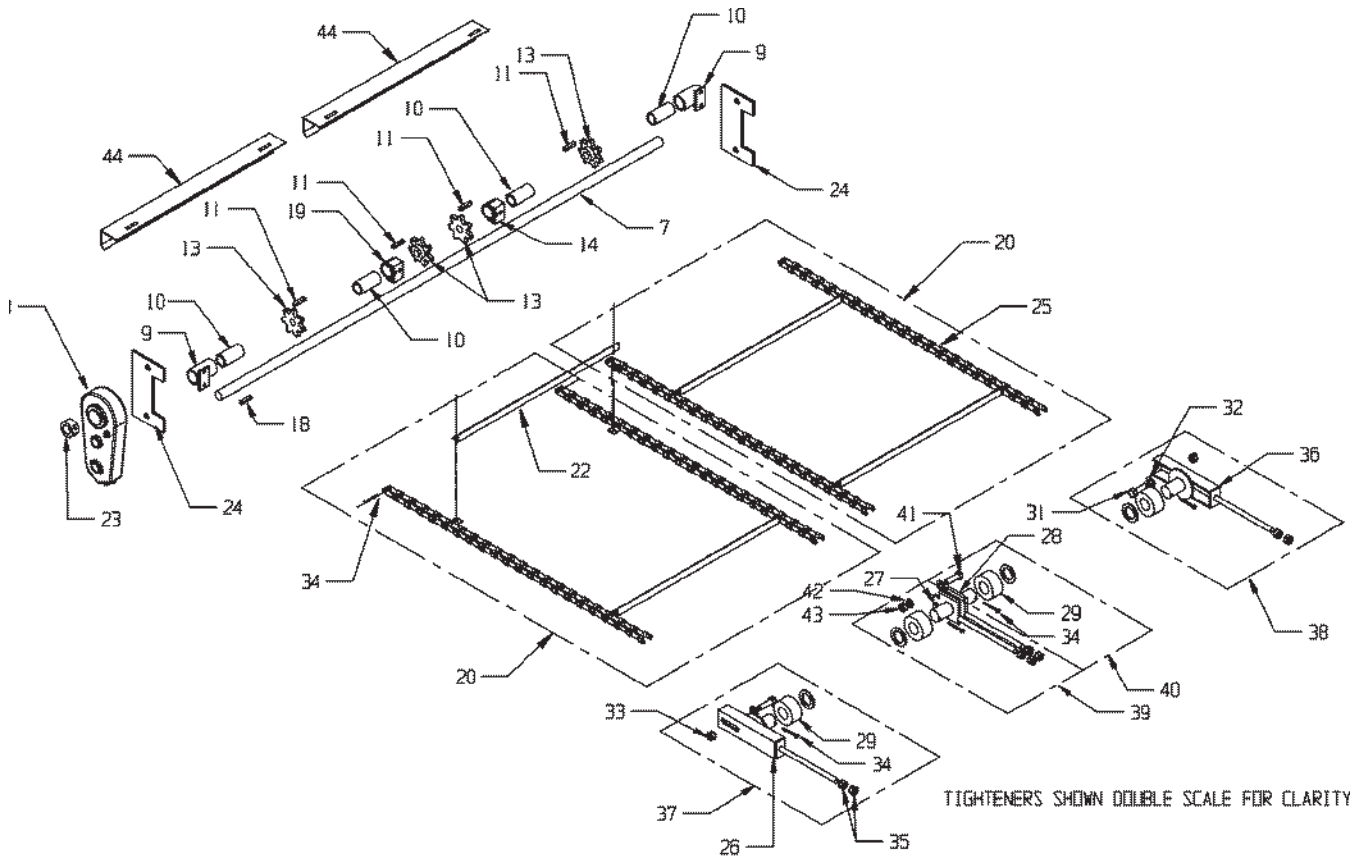
VB750-ApronParts.cdr

## APRON & RELATED PARTS FOR STANDARD 67P11 CHAIN

*Models VB750*

KEY	PART NO.	QTY	DESCRIPTION
1	E02027	584	Link, 67P11
2	E20742-10	72	Slat For 67P11 Chain, 37-1/2" OA
7	E00232-11	1	Shaft, Apron 2-3/8" Dia. - 94" Long and 67P11 Chain Only
8	VB-000-61	1	Gear Box, Apron Drive ( <i>see Separate Listing</i> )
9	E00234-11	2	Bearing Holder, Outside for 2-3/8" Shaft and 67P11 Chain Only
10	E00236-11	4	Bearing, Bronze 2.386" I.D.
11	E00238-11	4	Key, Square 5/8" x 5/8" x 2.250" Hardened
13	E00242-11	4	Sprocket EMC-57 9-Tooth Hardened Teeth for 67P11 Chain Only
14	E00244-11	1	Bearing Holder, LH Center for 2-3/8" Shaft
18	VB-00181-11	1	Key, 5/8" x 5/8" x 4" Hardened
19	E20737-11	1	Bearing Holder, RH Center for 2-3/8" Shaft
20	E20740-11	2	Apron Complete, 67P11
23	VB-00155-11	1	Shaft Collar, Split, 2-3/8" I.D.
24	VB-00019-12	2	Back Shaft End Guard
26	E02024-11	1	Tightener Weldment, RH
27	E02040-11	1	Tightener Weldment, Right Center
28	E02031-11	1	Tightener Weldment, Left Center
29	E02034	4	Roller, Nylon
31		2	Bolt, 5/8" x 2"
32		4	Washer, 5/8" Flat
33		2	Nut, 5/8" Nylock
34	E02035	4	Pin, Cotter
35	E02020-11	8	Nut, 1-1/8" NC
36	E02037-11	1	Tightener Weldment, LH
37	E02038-11	1	Tightener, Complete RH
38	E02039-11	1	Tightener, Complete LH
39	E02032-11	1	Tightener, Complete RH Center
40	E02033-11	1	Tightener, Complete LH Center
41		1	Bolt, 3/4-10x2-3/4
42		2	Washer, 3/4 Flat
43		1	Nut, 3/4-10 Nylock
44	3600-VB750-8	2	Apron Shaft Guard

# APRON & RELATED PARTS FOR OPTIONAL 667XH PINTLE CHAIN *Models VB750*



VB750-ApronParts-Optional.cdr

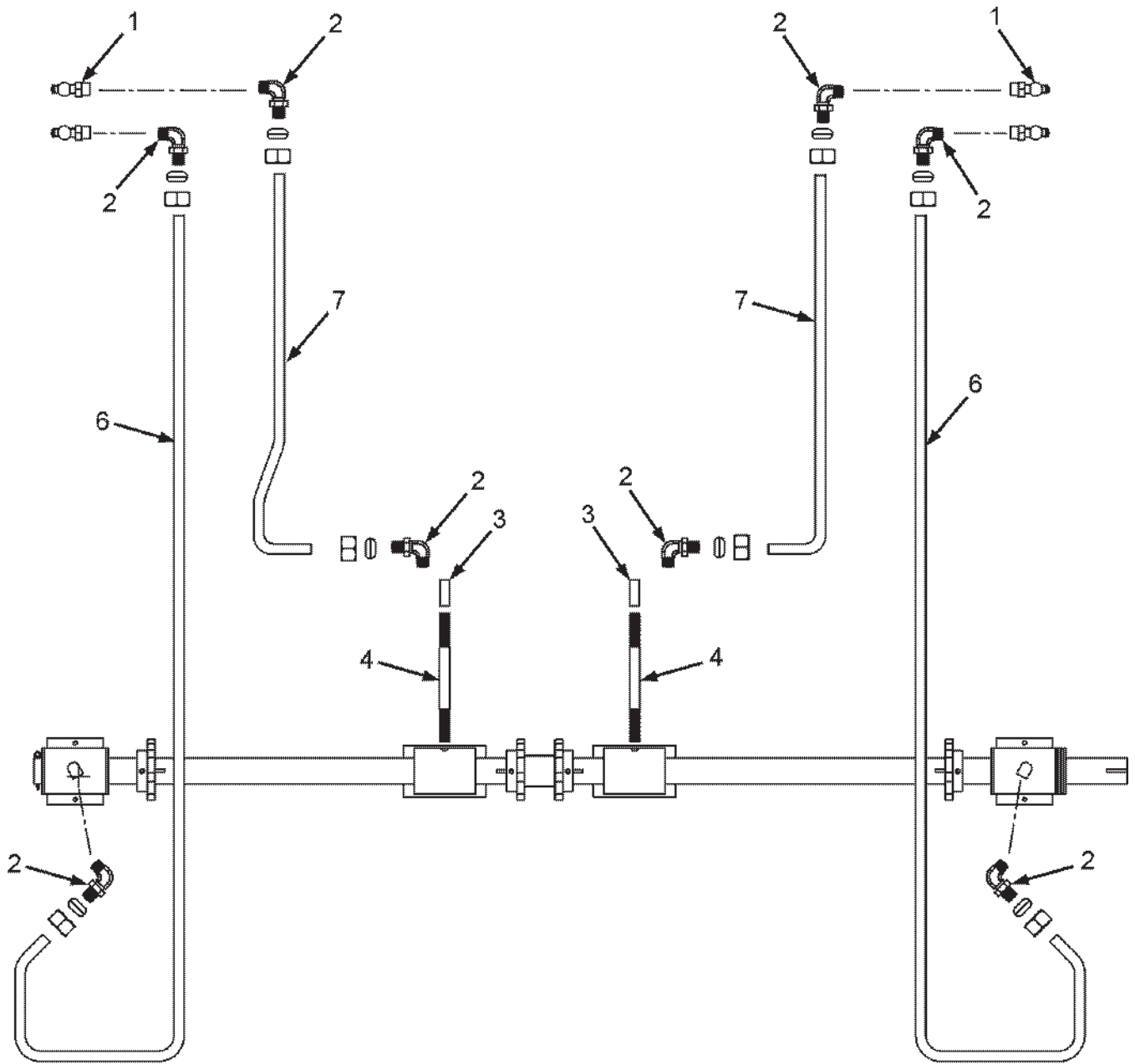
**APRON & RELATED PARTS  
FOR OPTIONAL 667XH PINTLE CHAIN**

*Models VB750*

KEY	PART NO.	QTY	DESCRIPTION
7	E00232-11P	1	Shaft, Apron 2-3/8" Dia. x 94" for 667XH Pintle Chain Only
8	VB-000-61	1	Gear Box, Apron Drive ( <i>see Separate Listing</i> )
9	E00234-11P	2	Bearing Holder, Outside for 2-3/8" Shaft and 667XH Chain Only
10	E00236-11	4	Bearing, Bronze 2.386" I.D.
11	E00238-11	4	Key, Square 5/8" x 5/8" x 3.25" Hardened
13	E20738-11	4	Sprocket For 667XH Pintle Chain EMC-56 10-Tooth Hardened
14	E00244-11	1	Bearing Holder, LH Center for 2-3/8" Shaft
18	VB-00181-11	1	Key, 5/8" x 5/8" x 4" Hardened
19	E20737-11	1	Bearing Holder, RH Center for 2-3/8" Shaft
20	E20740-04	2	Apron Complete, 667XH Pintle Chain
21	E20741	4	Connector Repair Pin & Cotter
22	E20742	70	Slat For 667XH Pintle Chain, 37-1/2" OA
23	VB-00155-11	1	Shaft Collar, Split, 2-3/8" ID
24	VB-00019	2	Back Shaft End Guard
25	E20743		Link, 667XH
26	E02024-11	1	Tightener Weldment, RH
27	E02040-11	1	Tightener Weldment, Right Center
28	E02031-11	1	Tightener Weldment, Left Center
29	E02034	4	Roller, Nylon
31		2	Bolt, 5/8" x 2"
32		4	Washer, 5/8" Flat
33		2	Nut, 5/8" Nylock
34	E02035	4	Pin, Cotter
35	E02020-11	8	Nut, 1-1/8" NC
36	E02037-11	1	Tightener Weldment, LH
37	E02038-11	1	Tightener, Complete RH
38	E02039-11	1	Tightener, Complete LH
39	E02032-11	1	Tightener, Complete RH Center
40	E02033-11	1	Tightener, Complete LH Center
41		1	Bolt, 3/4-10x2-3/4
42		2	Washer, 3/4 Flat
43		1	Nut, 3/4-10 Nylock
44	3600-VB750-8	2	Apron Shaft Guard

# LUBE BANK

Models VB750



VB560-LubeBank.cdr

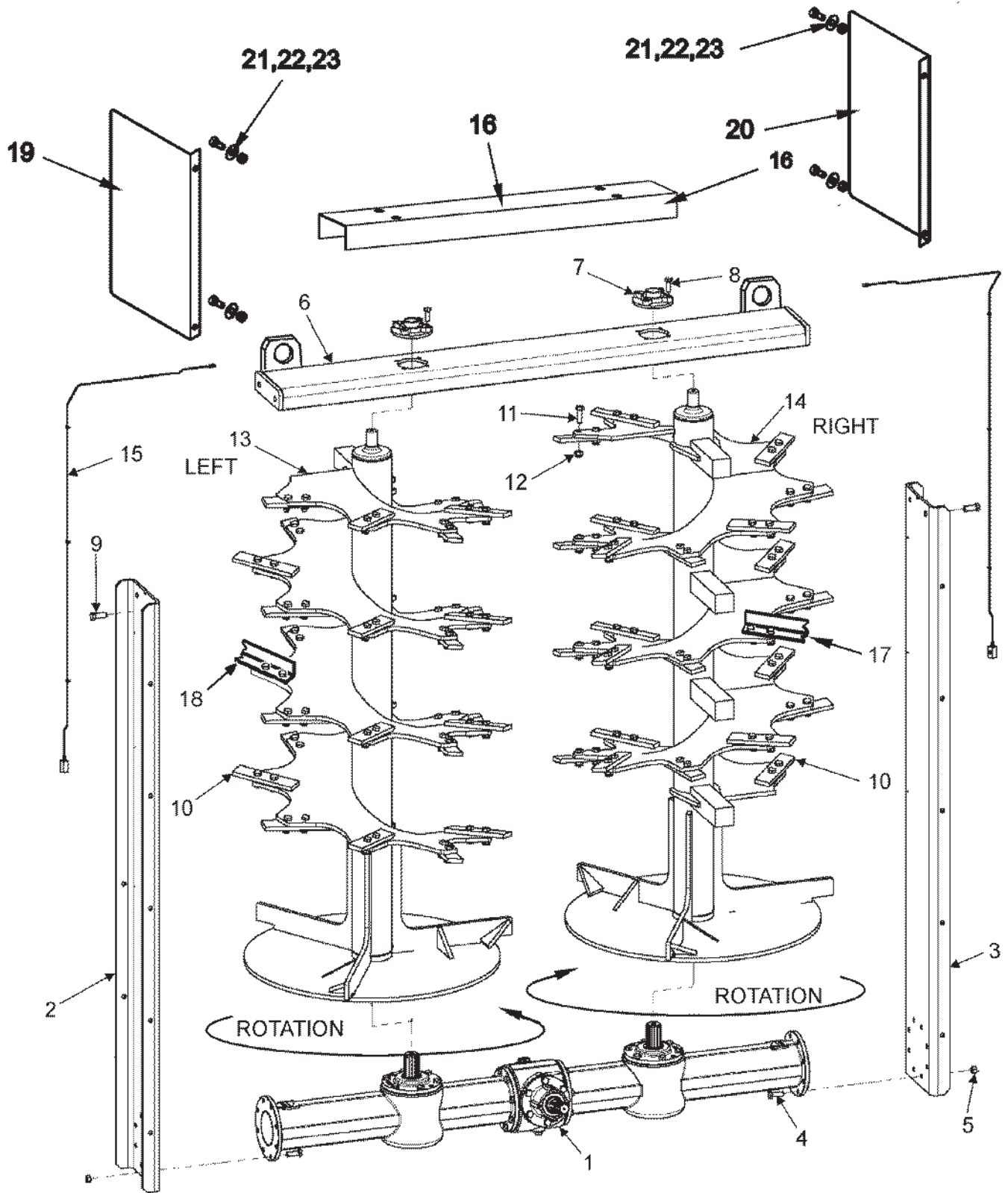
## LUBE BANK

*Models VB750*

<b>KEY</b>	<b>PART NO.</b>	<b>QTY.</b>	<b>DESCRIPTION</b>
1	E20730	4	Zerk, 1/8NPT Str
2	VB-00031	8	BCMP MELBW 3/16" T x 1/8 M Brass Comp 90° Elbow
3	66270	2	Steel Coupler 1/8" Blk
4	E20733-06	2	Nipple, Sch 40, 1/8NPT x 4 Blk
6	E22449	2	Tube, Outside - 34"
7	E22450	2	Tube, Inside - 57"

# 15MM BEATER HEAD ASSEMBLY, STANDARD

Models VB750





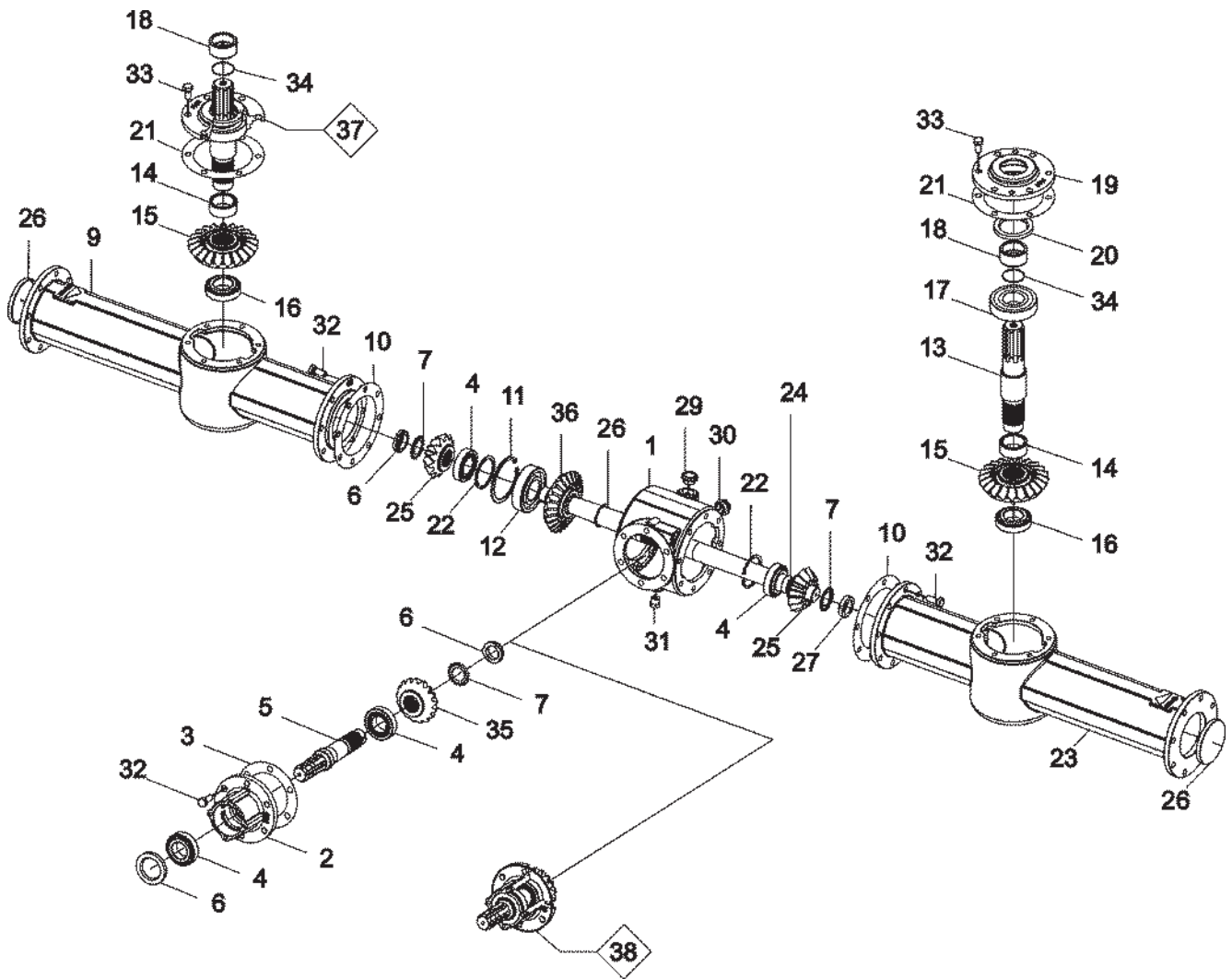
## 15 MM BEATER HEAD ASSEMBLY, STANDARD

*Models VB750*

KEY	PART NO.	QTY.	DESCRIPTION	
1	VB-00073	1	Gear Box SRT12 (see separate parts listing)	10760
2	VB-00074	1	Right Panel	14152
3	VB-00075	1	Left Panel	14153
4	VB-00076	16	Bolt, Hex-Hd M14x45	3489
5	VB-00077	16	Nut M14-8G	1799
6	VB-00078	1	Cross Bar	14247
7	VB-00079	2	UCFC 208 Ø40 Bearing	9905
8	VB-00080	8	Bolt, Hex-Hd M14x40	3311
9	VB-00081	4	Bolt, Hex-Hd M18x45	9156
10	VB-00144	56	Knife, 15mm Thick	10796
11	VB-00145-09	112	Bolt, Hex-Hd M16x50x1.5	10833
12	VB-00086-09	112	Nut M16	10834
13	VB-00146	1	left Beater, 15mm Thick	14119
14	VB-00147	1	Right Beater, 15mm Thick	14118
15	VB-00089	1	Lubrication Kit	9878
16	VB-00150	1	Guard	14246
17	VB-00083	28	Optional Formed Forged Blade	14626
18	VB-00082	28	Optional Formed Forged Blade	14627
19	VB-750-13-R	1	RH Rock Wing	
20	VB-750-13-L	1	LH Rock Wing	
21		4	Bolt, 3/8-16x1-1/4 Gr5	
22		4	Flat Washer, 3/8	
23		4	Nut, 3/8-16	

# VERTICAL BEATERS & RELATED PARTS

*Models VB750*



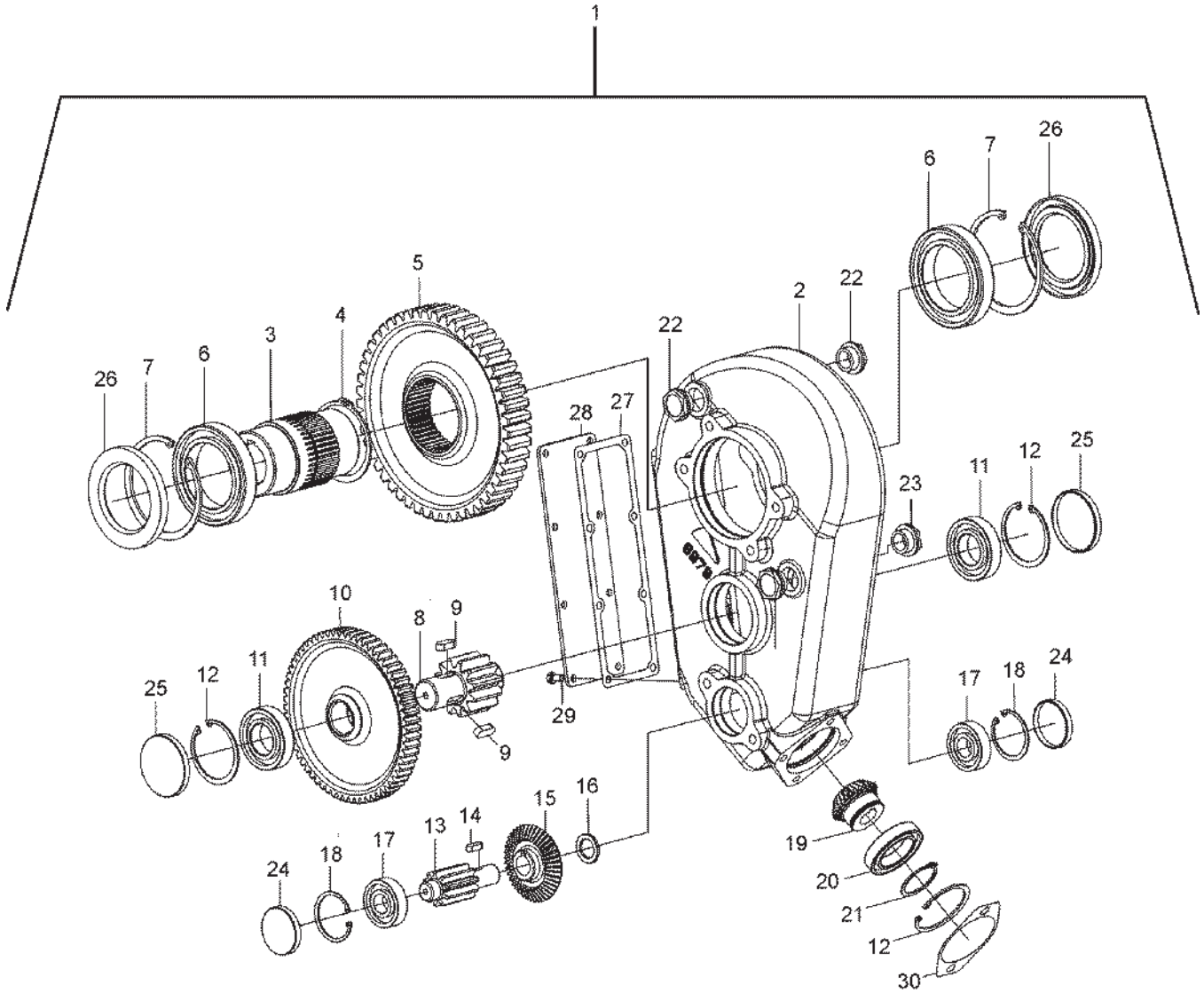
## VERTICAL BEATERS & RELATED PARTS

*Models VB750*

KEY	PART NO.	QTY.	DESCRIPTION	
1	VB-00090	1	Housing	9126
2	VB-00091	1	Hub	9127
3	VB-00092	1	Gasket	9133
4	VB-00093	4	Bearing 32209	1259
5	VB-00094	1	Shaft	9053
6	VB-00095	2	Threaded Ring	9137
7	VB-00096	3	Washer	9011
8	VB-00097	1	Oil Seal 55/85/10	7480
9	VB-00098	1	Right Housing	9646
10	VB-00099	2	Gasket	9135
11	VB-00100	1	Circlip I 120	1540
12	VB-00101	1	Bearing 6311	1531
13	VB-00102	2	Shaft	9055
14	VB-00103	2	Spacer	9123
15	VB-00104	2	Gear Z=22	9052
16	VB-00105	2	Bearing 32210	3349
17	VB-00106	2	Bearing 6311-2RS	13103
18	VB-00107	2	Spacer	9124
19	VB-00108	2	Calotte	9111
20	VB-00109	2	Oil Seal 70/100/10	7481
21	VB-00110	2	Gasket	9134
22	VB-00111	2	Circlip I 85	3436
23	VB-00112	1	Left Housing	9647
24	VB-00113	1	Shaft	9650
25	VB-00114	2	Bevel Pinion Z=13	9051
26	VB-00115	1	Circlip E 55	3430
27	VB-00116	1	Threaded Ring	9138
28	VB-00117	2	Plug	9345
29	VB-00118	1	Oil Plug Ø1"	9301
30	VB-00119	1	Oil Level Indicator Ø1"	9179
31	VB-00120	1	Oil Plug 1/2"	9707
32	VB-00121	22	Screw, Hex-Hd M14X35	3549
33	VB-00122	12	Screw, Hex-Hd M14X30	4138
34	VB-00123	2	O-Ring 2212	9139
35	VB-00124	1	Bevel Pinion Z=17	10380
36	VB-00125	1	Gear Z=24	10381
37	VB-00126	2	Calotte Complete	9141
38	VB-00127	1	Hub Complete	9783

# APRON DRIVE GEARBOX

Model VB750



## APRON DRIVE GEARBOX

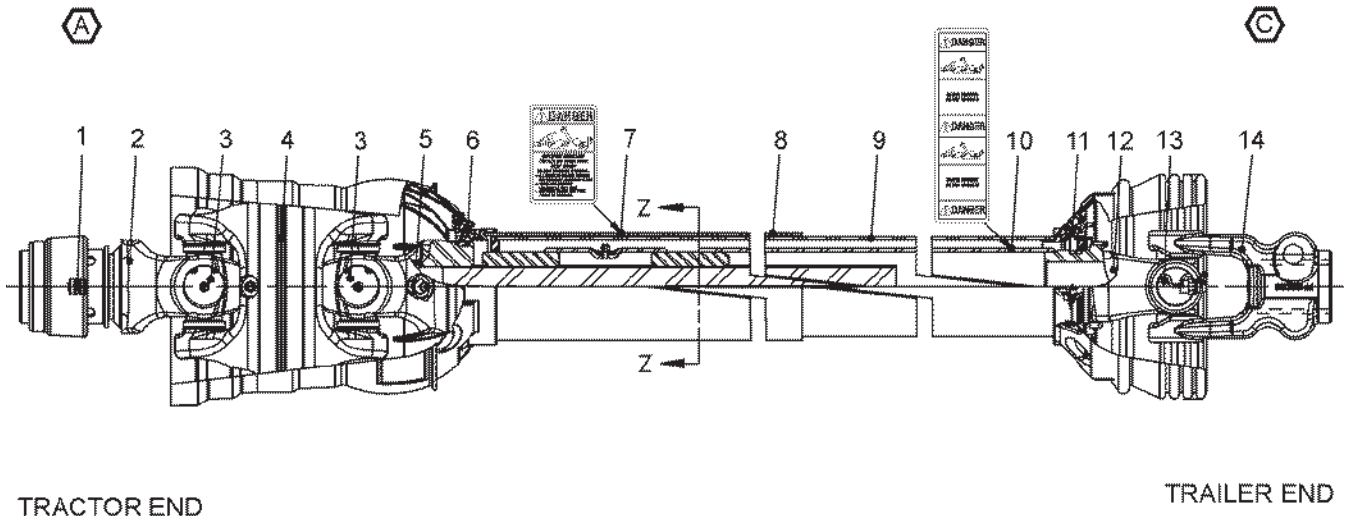
MODEL VB750

KEY	PART NO.	QTY	DESCRIPTION	
1	VB-00061	1	Complete Gearbox	15410-2.375
2	VB-00032	1	Housing	8979
3	VB-00033-11	1	Hub 2.375" Bore	15414
4	VB-00034	1	Circlip E 95	9066
5	VB-00035	1	Gear Z=54	8996
6	VB-00036	2	Bearing 6017	9067
7	VB-00037	2	Circlip I 130	9069
8	VB-00038	1	Pinion Z=12	9009
9	VB-00039	2	Key 12 x 8 x 30	4174
10	VB-00040	1	Gear Z=63	9007
11	VB-00041	2	Bearing 6208	10509
12	VB-00042	3	Circlip I 80	3435
13	VB-00043	1	Pinion Z=10	9008
14	VB-00044	1	Key 8 x 7 x 25	3396
15	VB-00045	1	Gear Z=43	8670-2
16	VB-00046	1	Spacer	9010
17	VB-00047	2	Bearing 6305	8596
18	VB-00048	2	Circlip I 62	3433
19	VB-00049	1	Pinion Z=28	8670-1
20	VB-00050	1	Bearing	1538
21	VB-00051	1	Circlip E 50	3428
22	VB-00052	2	Oil Plug Ø1" Gas	9175
23	VB-00053	2	Oil Level Indic Ø1" Glass	1831
24	VB-00054	2	Plug	8625
25	VB-00055	2	Plug	8243
26	VB-00056	2	Oil Seal 85/130/12	9068
27	VB-00057	1	Gasket	9064
28	VB-00058	1	Cover	9065
29	VB-00059	8	Screw Hex-Hd M8 x 16	3284
30	VB-00060	1	Gasket	8671

# REMOVABLE CV TELESCOPING UNIVERSAL JOINT ASSEMBLY WITH GUARD, TRAILER TO TRACTOR

(10/21/11)

MODEL VB750, 1 3/4-20 and 1 3/8-21 Spline

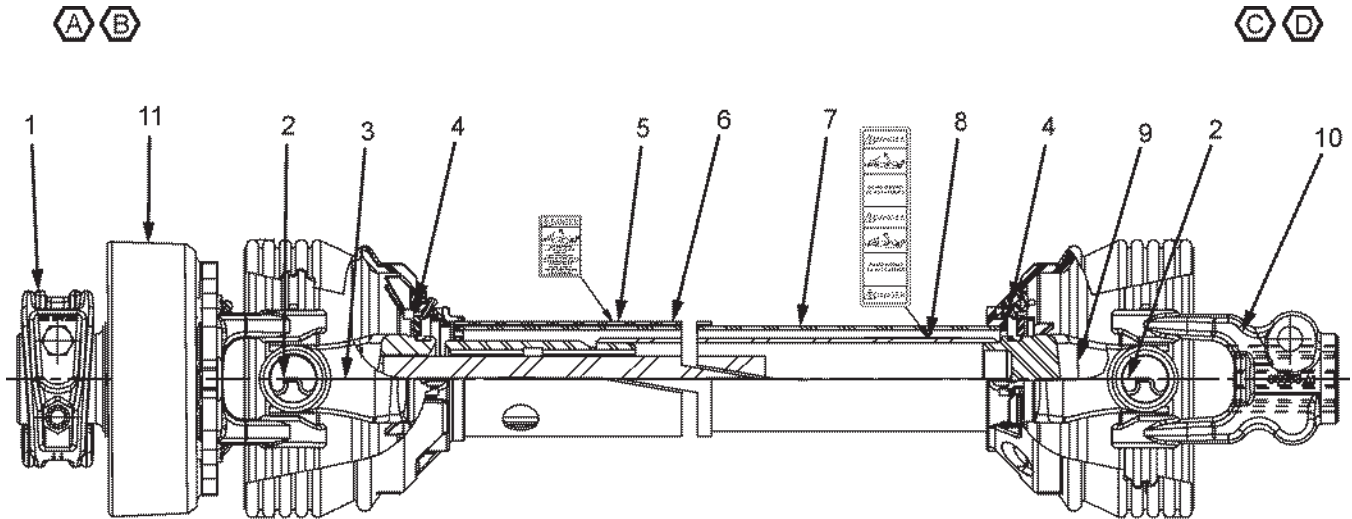


VB750-UniversalJointAssembly-245-25785.cdr

KEY	PART NO.	QTY1 3/4-20	QTY1 3/8-21	DESCRIPTION
A	E00475-10	1	0	Joint & Shaft Half Asm W/Guard, 93-25052
	E00471-10	0	1	Joint & Shaft Half Asm W/Guard, 93-25050
C	E00476-11	1	1	Joint & Tube Half Asm W/Guard, 92-25785
1	E00476-10	1	0	SSL/AutoLok Repair Kit, 26-13387
	E00451-10	0	1	SSL/AutoLok Repair Kit, 26-15120
2	E00472-10	1	0	WWCV Auto-Lok Yoke Asm 68810-1005
	E00452-10	0	1	WWCV Auto-Lok Yoke Asm 68810-1003
3	E00453-10	2	2	AB8/AW24EBL Cross Kit 03-15570
4	E00454-10	1	1	WWCV Center Housing 26-16033
5	E00456-10	1	1	WWCV Yoke & Shaft, (1.31-20) 99-25050
6	E00457-10	1	1	Guard Repair Kit 19-15194
7	E00458	1	1	Safety Sign, 13-10021
8	E00459-10	1	1	Outer Guard, 97-24063 (*items 6 & 11 repaired as a set)
9	E00472-11	1	1	Inner Guard, 96-25785 (*items 6 & 11 repaired as a set)
10	VB-00071	1	1	Safety Sign, 13-10022
11	E00457	1	1	Guard Repair Kit, 19-15129
12	E00473-11	1	1	Yoke, Tube & Slip Sleeve, 98-25785
13	E00465	1	1	35E Cross Kit, 03-15303
14	E00474-11	1	1	Yoke 35361-1013
	245-25785	0	1	Complete PTO 35E Cat. 6 80EBL
	245-25786	1	0	Complete PTO 35E Cat. 6 80EBL

# 35E UNIVERSAL JOINT, TELESCOPING ASSEMBLY W/ GUARD - REAR WITH OVER-RUNNING CLUTCH

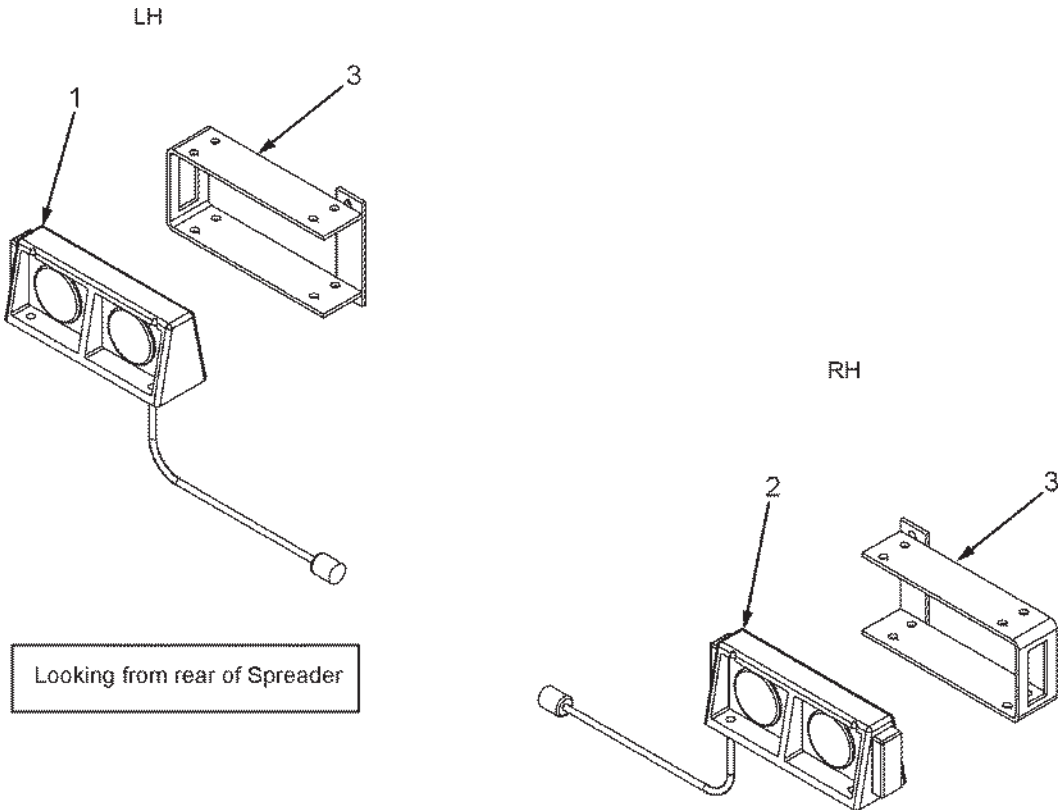
Model VB750



VB750-UniversalJointOverRunningClutch.cdr

KEY	PART NO.	QTY	DESCRIPTION
A	93-25787	1	Joint & Shaft Half Asm. w/Guard
B	95-25787	1	Joint & Shaft Half Asm.
C	92-25787	1	Joint & Tube Half Asm w/Guard
D	94-5787	1	Joint & Tube Half Asm. w/ Guard
1	38-20044	2	Yoke & Hub Asm.
2	03-15287	2	35EBL Cross Kit
3	99-25787	1	Yoke & Shaft (1.19 Square)
4	VB-00068	2	Guard Repair Kit
5	E00458	1	Safety Sign
6	97-25787	1	Outer Guard
7	96-25787	1	Inner Guard
8	VB-00071	1	Safety Sign
9	98-25787	1	Yoke, Tube & Slip Sleeve
10	VB-00065	1	Yoke
11	38-52113	1	Clutch Pack

# STANDARD HIGHWAY LIGHTING WITH AMBER SIDE LIGHT



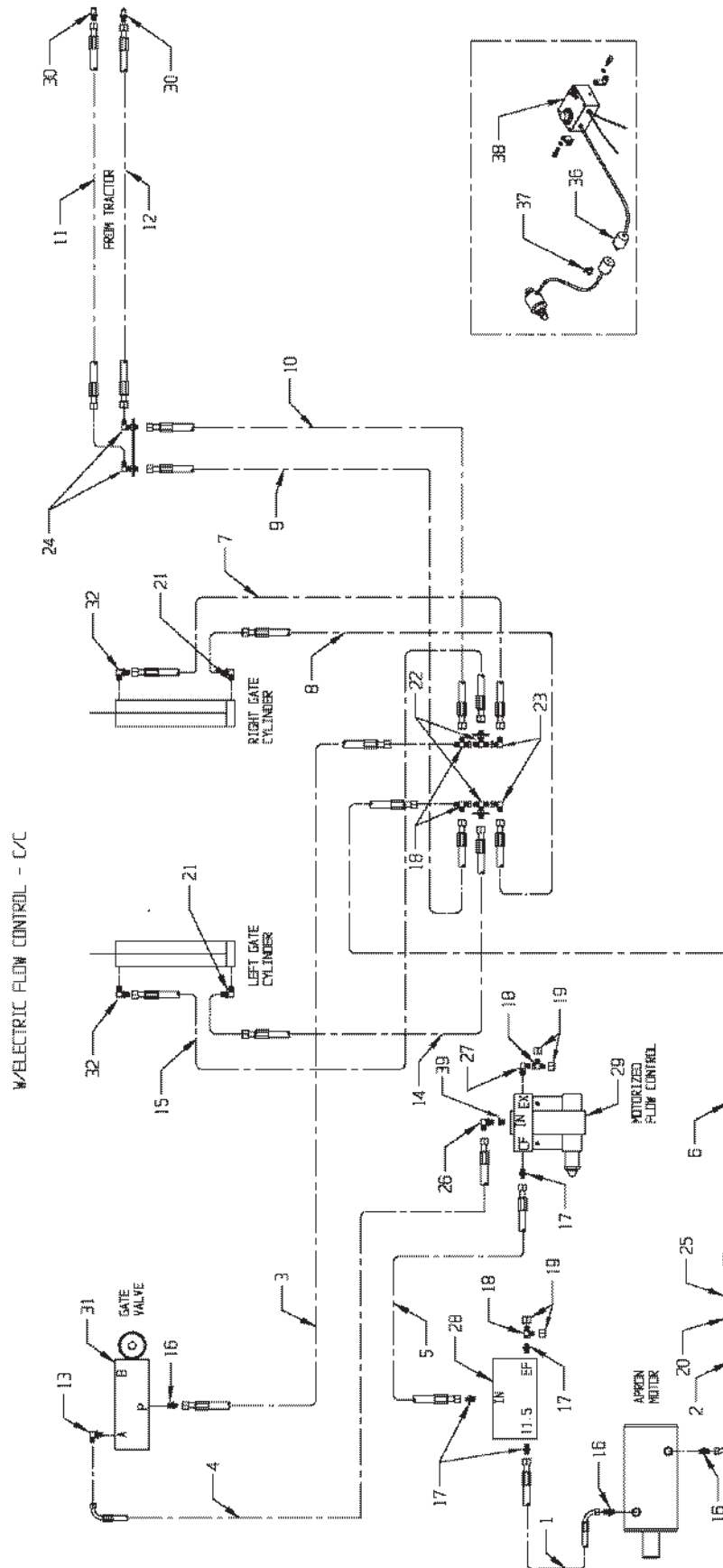
KEY	PART NO.	QTY	DESCRIPTION
1	54209-006	1	Dual Light LH w/4-Plug
2	54209-020	1	Dual Light RH w/4-Plug
3	3465-VB750-11	2	Bracket, Light
	002430		Harness With 7 Pin Plug And 4-Flat, 30'
	002515		Rear Wishbone Harness, 15'
	802651		Red Lens
	802650		Amber Lens



This page intentionally blank.

# HYDRAULIC ASSEMBLY - ELECTRIC FLOW CONTROL - CLOSED CENTER

Models VB750



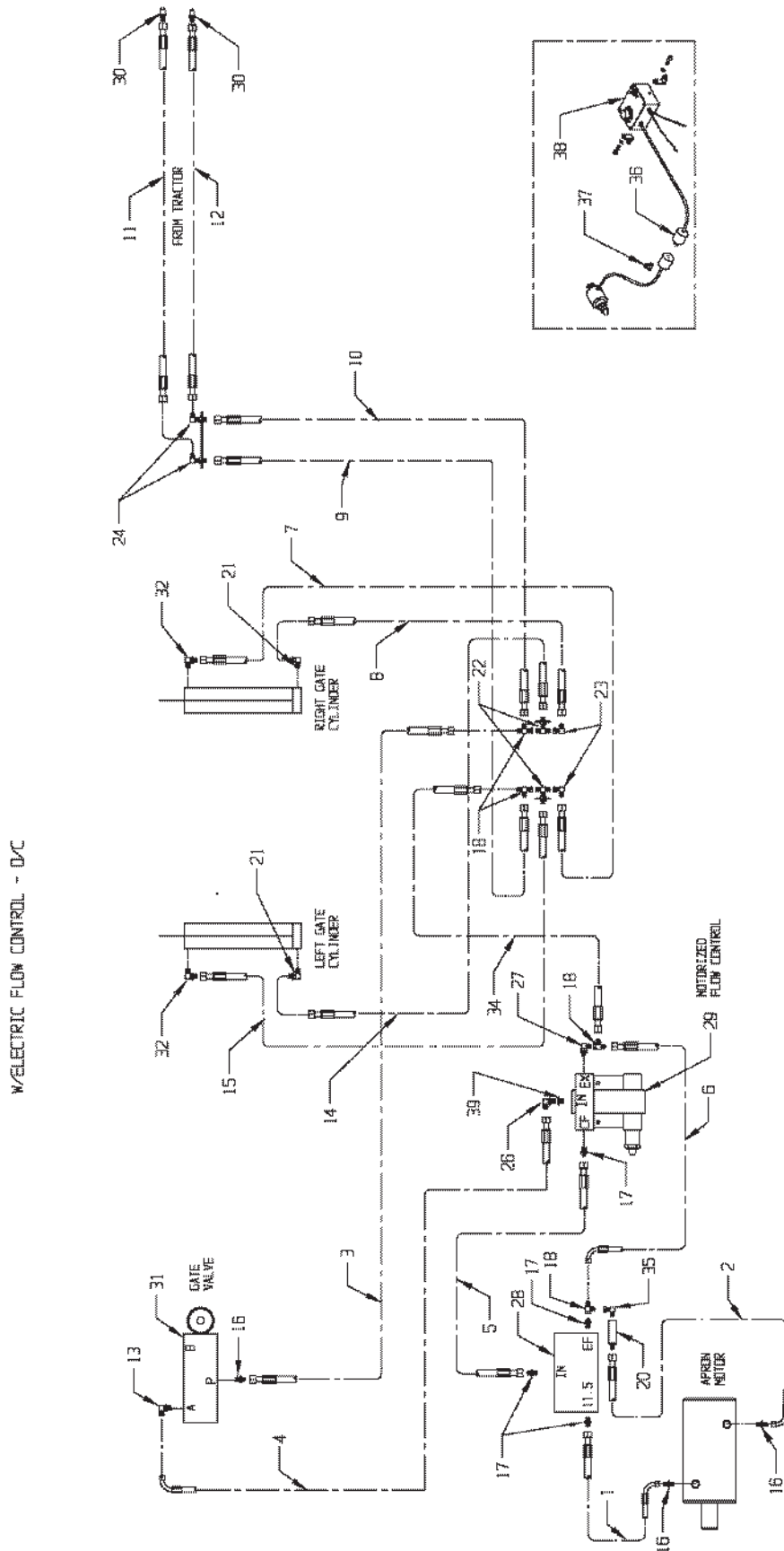
## Hydraulic Assembly - Electric Flow Control - Closed Center

*Models VB750*

KEY	PART NO.	QTY	DESCRIPTION
1	VB-00182	1	Hose, 8M3K-8FJX-8FJX-90S-56"
2	VB-00183	1	Hose, 8M3K-8FJX-8FJX-90S-59"
3	VB--00184	1	Hose, 8M3K-8FJX-8FJX-42"
4	VB-00185	1	Hose, 8M3K-8FJX-8FJX-90S-17"
5	VB-00186	1	Hose, 8M3K-8FJX-8FJX-90S-11"
6	VB-00187	1	Hose, 8M3K-8FJX-8FJX-28"
7	VB-00188	1	Hose, 6M3K-8FJX-8FJX-90S-37"
8	VB-00189	1	Hose, 6M3K-8FJX-8FJX-90S-43"
9	VB-00190	1	Hose, 8M3K-8FJX-8FJX-90S-210"
10	VB-00191	1	Hose, 8M3K-8FJX-8FJX-90S-206"
11	VB-00192	1	Hose, 8M3K-8FJX-8MP - 132"
12	VB-00193	1	Hose, 8M3K-8FJX-8MP - 132"
13	E21442	1	O-Ring Adapter to JIC 90° 6801-8-10
14	VB-00194	1	Hose, 6M3K-8FJX-8FJX-128"
15	VB-00195	1	Hose, 6M3K-8FJX-8FJX-117"
16	E00484-00	3	Adapter JIC to O-Ring 6400-8-10
17	E21450	4	Adapter 6400-8-12 O-Ring
18	E00485-09	4	ADAPTER TEE 6602-8
19	E00483-09	4	CAP 304-C-8
20	E00496-09	1	LINE CHECK LT-8-O
21	VB-00196	2	Male JIC To Male ORB, 90° Adapter - 6801-8
22	E20328	2	Tee 2703-LN-8
23	E20329	2	Male JIC To FM JIC - 6500-8
24	E00486-09	2	BULKHEAD 2701-LN-8
25	E21447	1	Ftg, Hydraulic, 8MJx8MORB 6400-8-8
26	VB-00197	1	Male JIC to Male ORB, 45° 6802-8-8
27	E23579	1	O-Ring to JIC 90° Adapter 6801-8-12
28	E21456-VB	1	Valve Controlled Flow BG511.5-12SAE
29	E00500	1	Motorized Flow Control
30	E01591	2	Quick Coupler
31	VB-00209	1	Selector Valve HC-VBN22
32	E00067-04	2	Male JIC To Male ORB, 90° Adapter - 6801-8-8
36	E00503-04	1	Flat Plug Connector
37	E00504	3	Cord Clamp
38	E00502	1	Electric Flow Controller
39	VB-00201	1	Str. Bushing, 6410-12-8

# HYDRAULIC ASSEMBLY - ELECTRIC FLOW CONTROL - OPEN CENTER

Models VB750



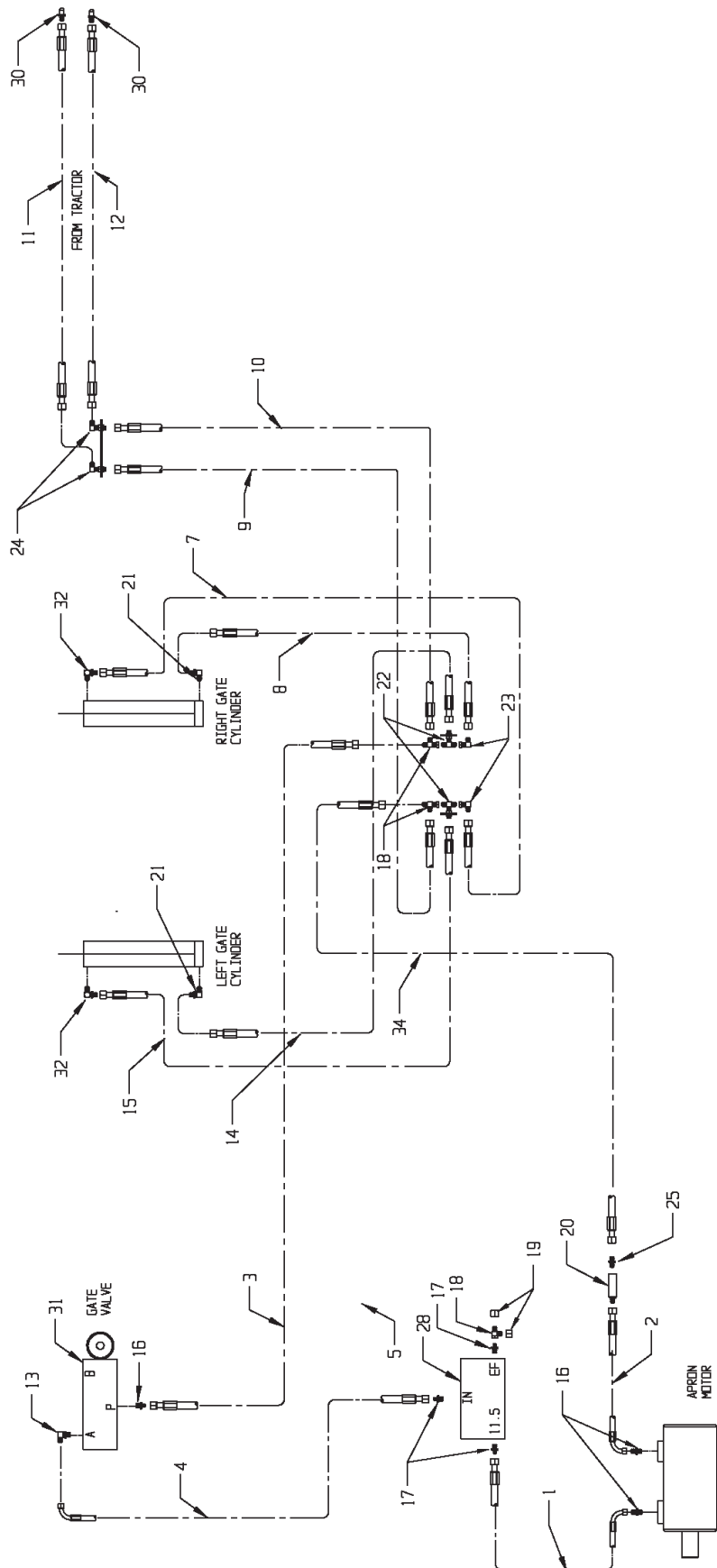
## Hydraulic Assembly - Electric Flow Control - Open Center

*Models VB750*

KEY	PART NO.	QTY	DESCRIPTION
1	VB-00182	1	Hose, 8M3K-8FJX-8FJX-90S-56"
2	VB-00183	1	Hose, 8M3K-8FJX-8FJX-90S-59"
3	VB-00184	1	Hose, 8M3K-8FJX-8FJX-42"
4	VB-00185	1	Hose, 8M3K-8FJX-8FJX-90S-17"
5	VB-00186	1	Hose, 8M3K-8FJX-8FJX-90S-11"
6	VB-0018	1	Hose, 8M3K-8FJX-8FJX-90M-12"
7	VB-00188	1	Hose, 6M3K-8FJX-8FJX-90S-37"
8	VB-00189	1	Hose, 6M3K-8FJX-8FJX-90S-43"
9	VB-00199	1	Hose, 8M3K-8FJX-8FJX-90S-210"
10	VB-00200	1	Hose, 8M3K-8FJX-8FJX-90S-206"
11	VB-00192	1	Hose, 8M3K-8FJX-8MP - 132"
12	VB-00193	1	Hose, 8M3K-8FJX-8MP - 132"
13	E21442	1	O-Ring Adapter to JIC 90° 6801-8-10
14	VB-00194	1	Hose, 6M3K-8FJX-8FJX-128"
15	VB-00195	1	Hose, 6M3K-8FJX-8FJX-117"
16	E00484-00	3	Adapter JIC to O-Ring 6400-8-10
17	E21450	4	Adapter 6400-8-12 O-Ring
18	E00485-09	4	ADAPTER TEE 6602-8
20	E00496-09	1	LINE CHECK LT-8-O
21	VB-00196	2	Male JIC To Male ORB, 90° Adapter - 6801-8
22	E20328	2	Tee 2703-LN-8
23	E20329	2	Male JIC To FM JIC - 6500-8
24	E00486-09	2	BULKHEAD 2701-LN-8
26	VB-00197	1	Male JIC to Male ORB, 45° 6802-8-8
27	E23579	1	O-Ring to JIC 90° Adapter 6801-8-12
28	E21456-VB	1	Valve Controlled Flow BG511.5-12SAE
29	E00500	1	Motorized Flow Control
30	E01591	2	Quick Coupler
31	VB-00209	1	Selector Valve HC-VBN22
32	E00067-04	2	Male JIC To Male ORB, 90° Adapter - 6801-8-8
34	VB-00202	1	Hose, 8M3K-8FJX-8FJX-18"
35	VB-00203	1	Fitting, Elbow, M-F, 6809-8
36	E00503-04	1	Flat Plug Connector
37	E00504	3	Cord Clamp
38	E00502	1	Electric Flow Controller
39	VB-00201	1	Str. Bushing, 6410-12-8

# HYDRAULIC ASSEMBLY-NO ELECTRIC FLOW CONTROL-CLOSED CENTER

Models VB750



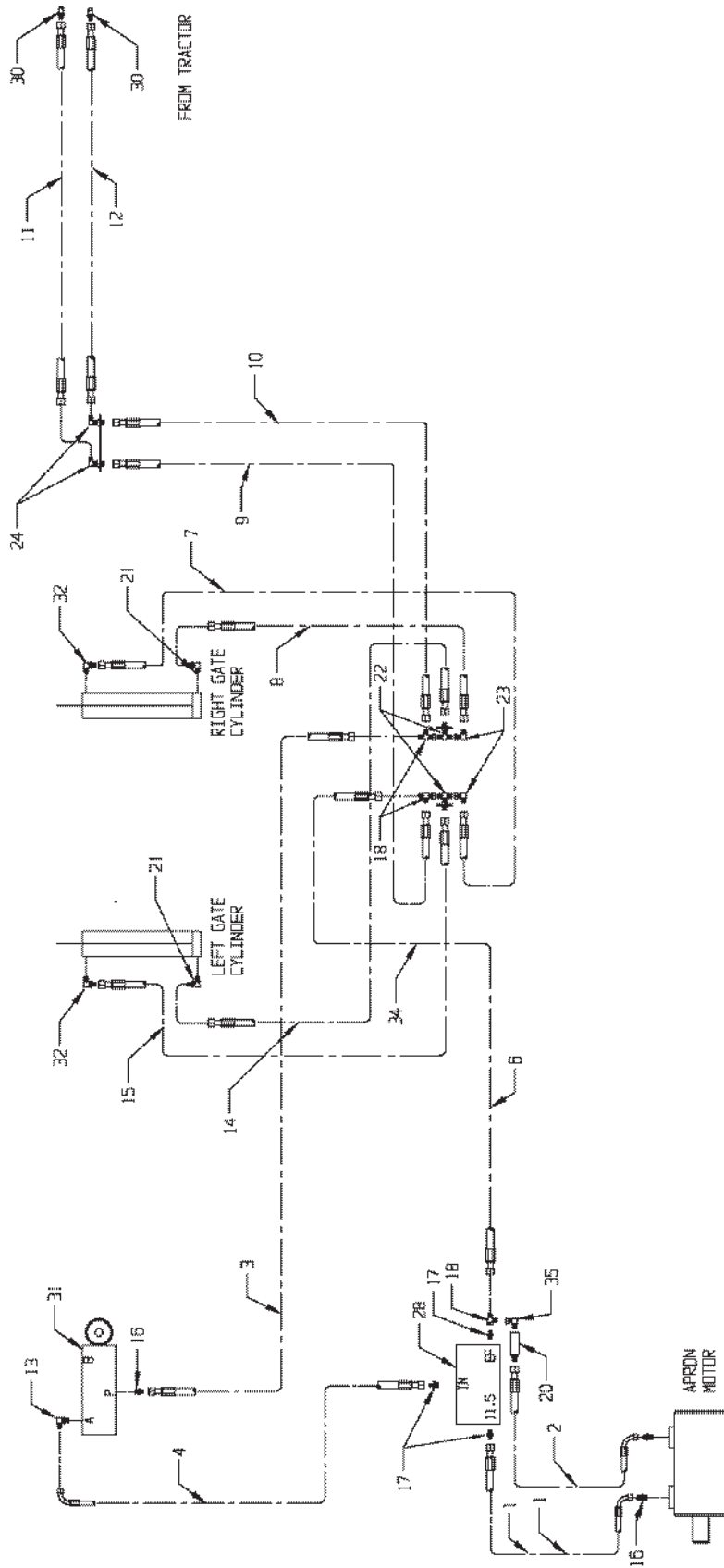
## Hydraulic Assembly - No Electric Flow Control - Closed Center

*Models VB750*

KEY	PART NO.	QTY	DESCRIPTION
1	VB-00182	1	Hose, 8M3K-8FJX-8FJX-90S-56"
2	VB-00183	1	Hose, 8M3K-8FJX-8FJX-90S-59"
3	VB-00184	1	Hose, 8M3K-8FJX-8FJX-42"
4	VB-00185	1	Hose, 8M3K-8FJX-8FJX-90S-17"
6	VB-00187	1	Hose, 8M3K-8FJX-8FJX-28"
7	VB-00188	1	Hose, 6M3K-8FJX-8FJX-90S-37"
8	VB-00189	1	Hose, 6M3K-8FJX-8FJX-90S-43"
9	VB-00190	1	Hose, 8M3K-8FJX-8FJX-90S-210"
10	VB-00191	1	Hose, 8M3K-8FJX-8FJX-90S-206"
11	VB-00192	1	Hose, 8M3K-83FJX-8MP - 132"
12	VB-00193	1	Hose, 8M3K-8FJX-8MP - 132"
13	E21442	1	O-Ring Adapter to JIC 90° 6801-8-10
14	VB-00194	1	Hose, 6M3K-8FJX-8FJX-128"
15	VB-00195	1	Hose, 6M3K-8FJX-8FJX-117"
16	E00484-00	3	Adapter JIC to O-Ring 6400-8-10
17	E21450	3	Adapter 6400-8-12 O-Ring
18	E00485-09	3	ADAPTER TEE 6602-8
19	E00483-09	2	CAP 304-C-8
20	E00496-09	1	LINE CHECK LT-8-O
21	VB-00196	2	Male JIC To Male ORB, 90° Adapter - 6801-8
22	E20328	2	Tee 2703-LN-8
23	E20329	2	Male JIC To FM JIC - 6500-8
24	E00486-09	2	BULKHEAD 2701-LN-8
25	E21447	2	Ftg, Hydraulic, 8MJx8MORB 6400-8-8
28	E21456-VB	1	Valve Controlled Flow BG511.5-12SAE
30	E01591	2	Quick Coupler
31	VB-00209	1	Selector Valve HC-VBN22
32	E00067-04	2	Male JIC To Male ORB, 90° Adapter - 6801-8-8
34	VB-00204	1	Hose, 8M3K-8FJX-8FJX-28"

# HYDRAULIC ASSEMBLY - NO ELECTRIC FLOW CONTROL - OPEN CENTER

MODELS VB750



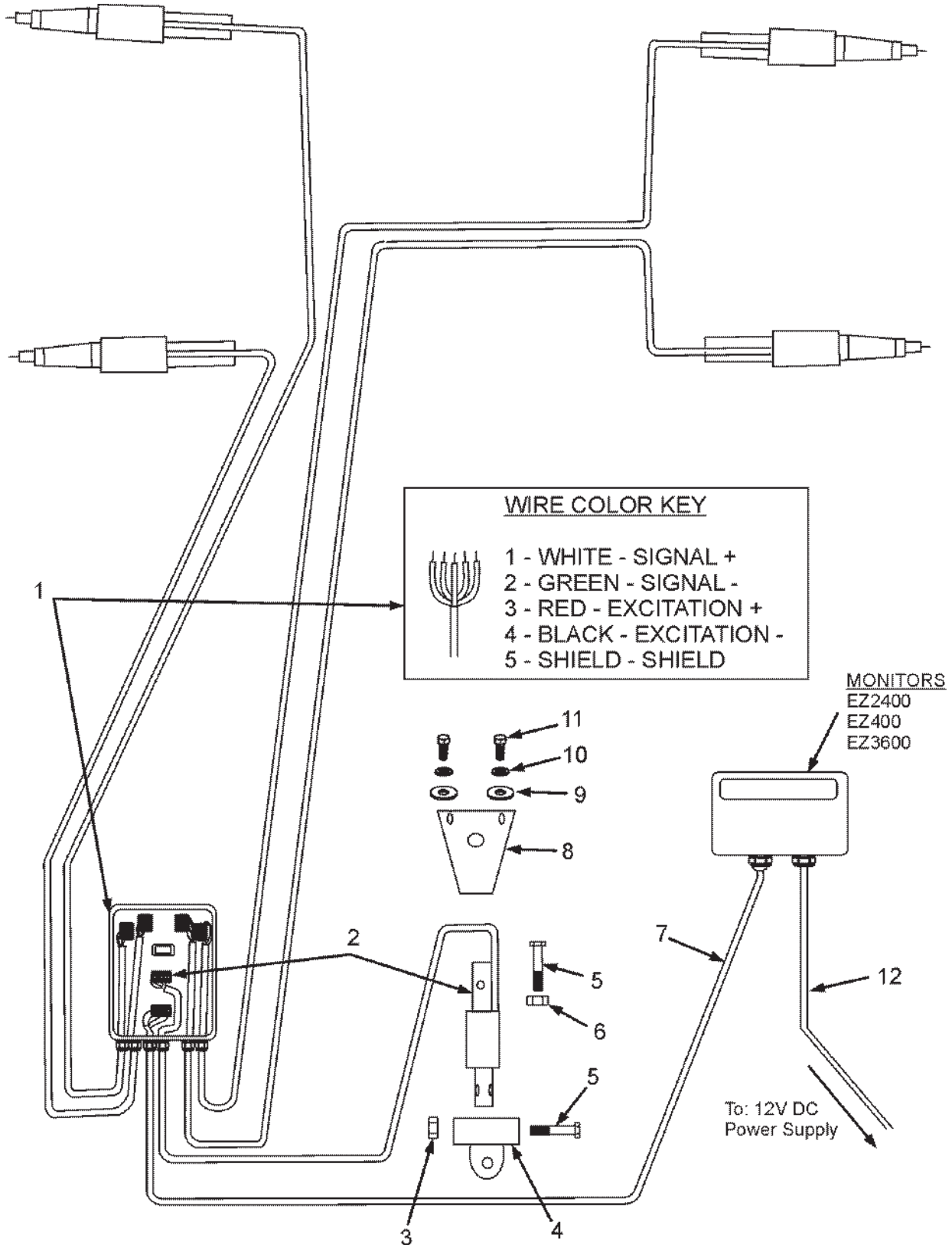


## Hydraulic Assembly - No Electric Flow Control - Open Center

*Models VB750*

KEY	PART NO.	QTY	DESCRIPTION
1	VB-00182	1	Hose, 8M3K-8FJX-8FJX-90S-56"
2	VB-00183	1	Hose, 8M3K-8FJX-8FJX-90S-59"
3	VB-00184	1	Hose, 8M3K-8FJX-8FJX-42"
4	VB-00185	1	Hose, 8M3K-8FJX-8FJX-90S-17"
6	VB-00187	1	Hose, 8M3K-8FJX-8FJX-28"
7	VB-00188	1	Hose, 6M3K-8FJX-8FJX-90S-37"
8	VB-00189	1	Hose, 6M3K-8FJX-8FJX-90S-43"
9	VB-00190	1	Hose, 8M3K-8FJX-8FJX-90S-210"
10	VB-00191	1	Hose, 8M3K-8FJX-8FJX-90S-206"
11	VB-00192	1	Hose, 8M3K-8FJX-8MP - 132"
12	VB-00193	1	Hose, 8M3K-8FJX-8MP - 132"
13	E21442	1	O-Ring Adapter to JIC 90° 6801-8-10
14	VB-00194	1	Hose, 6M3K-8FJX-8FJX-128"
15	VB-00195	1	Hose, 6M3K-8FJX-8FJX-117"
16	E00484-00	3	Adapter JIC to O-Ring 6400-8-10
17	E21450	3	Adapter 6400-8-12 O-Ring
18	E00485-09	3	ADAPTER TEE 6602-8
20	E00496-09	1	LINE CHECK LT-8-O
21	VB-00196	2	Male JIC To Male ORB, 90° Adapter - 6801-8
22	E20328	2	Tee 2703-LN-8
23	E20329	2	Male JIC To FM JIC - 6500-8
24	E00486-09	2	BULKHEAD 2701-LN-8
28	E21456-VB	1	Valve Controlled Flow BG511.5-12SAE
30	E01591	2	Quick Coupler
31	VB-00209	1	Selector Valve HC-VBN22
32	E00067-04	2	Male JIC To Male ORB, 90° Adapter - 6801-8-8
35	VB-00203	1	Fitting, Elbow, M-F, 6809-8

# WEIGH SCALE



VB750-WeighScale.cdr

## WEIGH SCALE

KEY	PART NO.	QTY	DESCRIPTION
1	404256		Assy, J-Box 6 PT Mobile
2	407059		Weigh Bar
3	37192		Nylock 1-8 GR8
4	3465		VB750-SK1
5	15474		1-8 x 5-1/2 GR8
6	37192		Nylock 1-8 GR8
7	141837		30 FT J-Box
8	3750-VB750-8		Hitch Cover
9	33008		3/8" FW
10	33622		3/8" Split Lock
11	13105		3/8" 16 x 1
12	403335		17 FT - 2 Wire

## LIMITED WARRANTY STATEMENT

Meyer's Equipment Mfg. Corp. warrants each new Meyer's E.M.C. product to be free from: defects in material and workmanship. This warranty is applicable only for the normal service life expectancy of the product or components, not to exceed 12 consecutive months from the date of delivery of the new Meyer's E.M.C. product to the original purchaser.

Genuine Meyer's E.M.C. replacement parts and components will be warranted for 365 days from date of purchase, or the remainder of the original equipment warranty period, whichever is longer.

Under no circumstances will it cover any merchandise or components thereof, which, in the opinion of the company, has been subjected to misuse, unauthorized modifications, alteration, and accident or if repairs have been made with parts other than those obtainable through Meyer's E.M.C.

Our obligation under this warranty shall be limited to repairing or replacing, free of charge to the original purchaser, any part that, in our judgement, shall show evidence of such defect, provided further that such part shall be returned within thirty (30) days from date of failure to Meyer's E.M.C., routed through the dealer and distributor from whom the purchase was made, transportation charges prepaid. Labor charges will be paid at a specified rate. Mileage will not be paid.

This warranty shall not be interpreted to render Meyer's E.M.C. liable for injury or damages of any kind or nature to person or property. This warranty does not extend to the loss of crops, loss because of delay in harvesting, or any expense or loss incurred for labor, substitute machinery, rental or for any other reason.

In addition to the above limited warranty statement the following applies:

Meyer's E.M.C. will replace (F.O.B. Dorchester) as Meyer's E.M.C. elects, for 10 years from purchase date - any polyethylene plastic boards which compromises the floor, sides, rear or front of the box portion of the manure spreader box (not labor) from rotting under normal usage to the original owner.

Except as set forth above, **Meyer's E.M.C. shall have no obligation or liability of any kind on account of any of its equipment and shall not be liable for special or consequential damages. Meyer's E.M.C. disclaims any implied warranty or merchantability or fitness for a particular purpose. Some states or provinces do not permit limitations or exclusions of implied warranties or incidental or consequential damages, so the limitations or exclusion in this warranty may not apply.**